



# LVS® 95XX Series Software Installation Guide

Copyright ©2016  
Microscan Systems, Inc.  
Tel: +1.425.226.5700 / 800.762.1149  
Fax: +1.425.226.8250

All rights reserved. The information contained herein is proprietary and is provided solely for the purpose of allowing customers to operate and/or service Microscan manufactured equipment and is not to be released, reproduced, or used for any other purpose without written permission of Microscan.

Throughout this manual, trademarked names might be used. We state herein that we are using the names to the benefit of the trademark owner, with no intention of infringement.

### **GS1 Solution Partner**



### ***Disclaimer***

The information and specifications described in this manual are subject to change without notice.

### ***Latest Manual Version***

For the latest version of this manual, see the Download Center on our web site at:  
[www.microscan.com](http://www.microscan.com).

### ***Technical Support***

For technical support, e-mail: [helpdesk@microscan.com](mailto:helpdesk@microscan.com).

### ***Warranty***

For current warranty information, see: [www.microscan.com/warranty](http://www.microscan.com/warranty).

### **Microscan Systems, Inc.**

#### **United States Corporate Headquarters**

+1.425.226.5700 / 800.762.1149

#### **United States Northeast Technology Center**

+1.603.598.8400 / 800.468.9503

#### **European Headquarters**

+31.172.423360

#### **Asia Pacific Headquarters**

+65.6846.1214

## Table of Contents

<b>IMPORTANT – READ PRIOR TO INSTALLATION .....</b>	<b>4</b>
<b>SYSTEM MANUALS .....</b>	<b>5</b>
Windows® XP Operating Instructions .....	5
Windows® 7 Operating Instructions .....	7
<b>SAFETY INSTRUCTIONS .....</b>	<b>8</b>
<b>INSTALLATION CHECKLIST.....</b>	<b>9</b>
<b>INSTALLATION STEPS – READ PRIOR TO INSTALLATION .....</b>	<b>9</b>
Windows® XP Installation Steps.....	10
Windows® 7 Installation Steps.....	28
<b>APPENDIX A: LVS-9510 AUXILIARY READHEAD INSTALLATION STEPS.....</b>	<b>46</b>
Installation Checklist .....	46
Installation Steps .....	46

## **Important – Read Prior to Installation**

Please read the information below before installing the LVS-95XX system.

- The LVS-95XX system arrives to your site packaged in a specially designed shipping carton. DO NOT discard this shipping carton in case you must ship or store the system for any reason. Failure to use this carton when returning your product to Microscan will void warranty.
- The LVS-95XX system supports Windows® 7 and Windows® XP Professional. The LVS-95XX system does not support Windows® Vista.
- All LVS-95XX systems must use the calibration card and installation flash drive issued with the system. The LVS-95XX system, calibration card and installation flash drive use the same serial number and must be used in conjunction with each other to obtain correct calibration results. Failure to use the calibration card and installation flash drive issued with the system will result in incorrect calibration results.
- If a USB device fails to load automatically, manually load the USB device using Device Manager. Consult your Systems Administrator for assistance, if required.
- If using an LVS-9510:
  - Minute imperfections may be seen in the LVS-9510 glass. These imperfections are minor and caused by the anti-reflective coating process. The imperfections will not affect the operation of the LVS-9510.
  - Treat the LVS-9510 as laboratory equipment, meaning that extreme care and delicacy should be used when servicing the equipment.
  - Routine cleaning of the viewing window is recommended weekly to maintain optimum performance. To maintain a clean and clear appearance, use a soft, lint-free, non-abrasive towel or cloth and clean only the outside of the viewing window. Use a commercially available household glass cleaner, such as Windex®, Glassex®, VISS®, and Mr. Muscle®. Do not use an industrial-strength glass cleaner. Do not clean the inside of the viewing window due to an anti-reflective coating.
  - If you have any questions or concerns about the performance of this equipment, please call your local Microscan distributor or Microscan technical support at +1.425.203.4841 or +1.800.762.1149.

## System Manuals

All LVS-95XX system manuals are stored in the following locations:

Installation flash drive	Each system purchase is supplied with an installation flash drive containing installation software and system manuals.
Host Computer	After successful installation of the LVS-95XX software, the system manuals are located at the paths below: <b>Windows® 7 (64-bit):</b> C:\Program Files (x86)\I9500\Manuals <b>Windows® 7 (32-bit):</b> C:\Program Files\I9500\Manuals <b>Windows® XP:</b> C:\Program Files\I9500\Manuals
Computer Desktop	After installing the LVS-95XX software, a “Manuals” icon is saved to the computer’s desktop. Double-click the “Manuals” desktop icon to access the system manuals.

System manuals are located on the installation flash drive. When inserting the installation flash drive with Autorun activated, screens automatically appear prompting you to install the LVS-95XX software. If you would like to view or print the manuals located on the installation flash drive **prior to installing the LVS-95XX software**, follow the steps below.

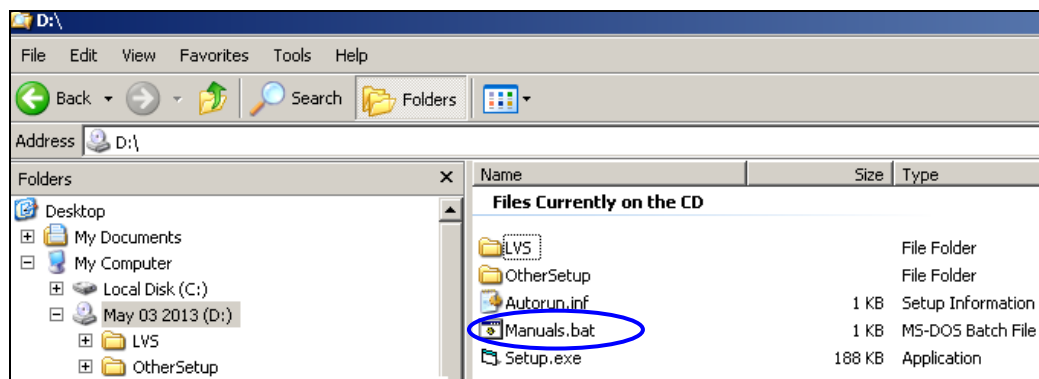
**IMPORTANT:** The steps below vary based on Windows® XP or Windows® 7 operating systems. Follow the instructions below based on which operating system resides on the computer running the LVS-95XX software.

## Windows® XP Operating Instructions

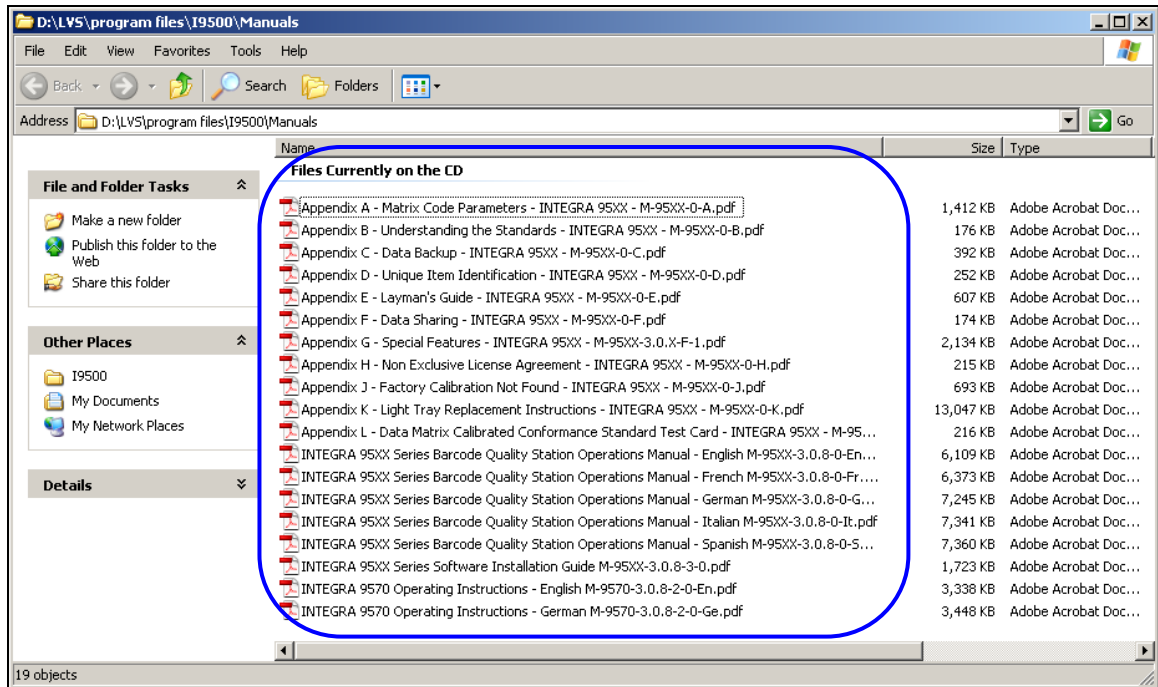
1. Press and **hold down** the SHIFT key for 30 seconds while at the same time inserting the installation flash drive into the USB drive; this prevents the system from automatically launching the LVS-95XX installation files.

***WARNING:*** You must hold down the SHIFT key for 30 seconds. Releasing the SHIFT key prior to 30 seconds will initiate the software installation process. If this occurs, eject and then re-insert the installation flash drive and follow step 1 again.

2. After 30 seconds, release the SHIFT key.
3. Open Windows Explorer and navigate to the flash drive drive containing the LVS-95XX flash drive (usually D:).
4. Double-click on the “Manuals.bat” file.

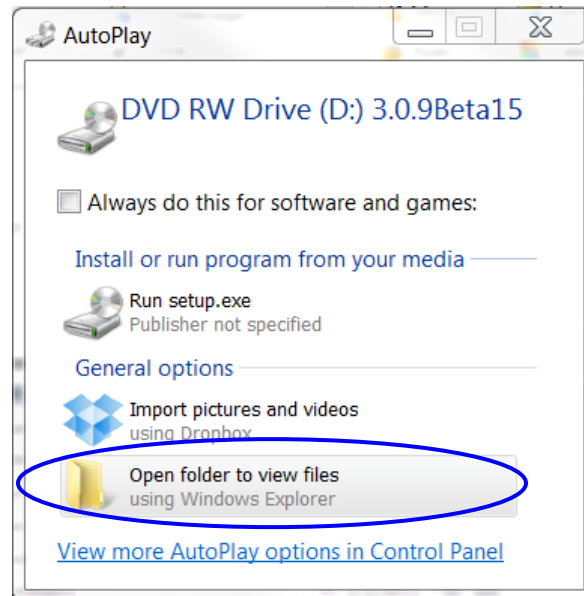


5. A window opens containing the manuals located on the installation flash drive.

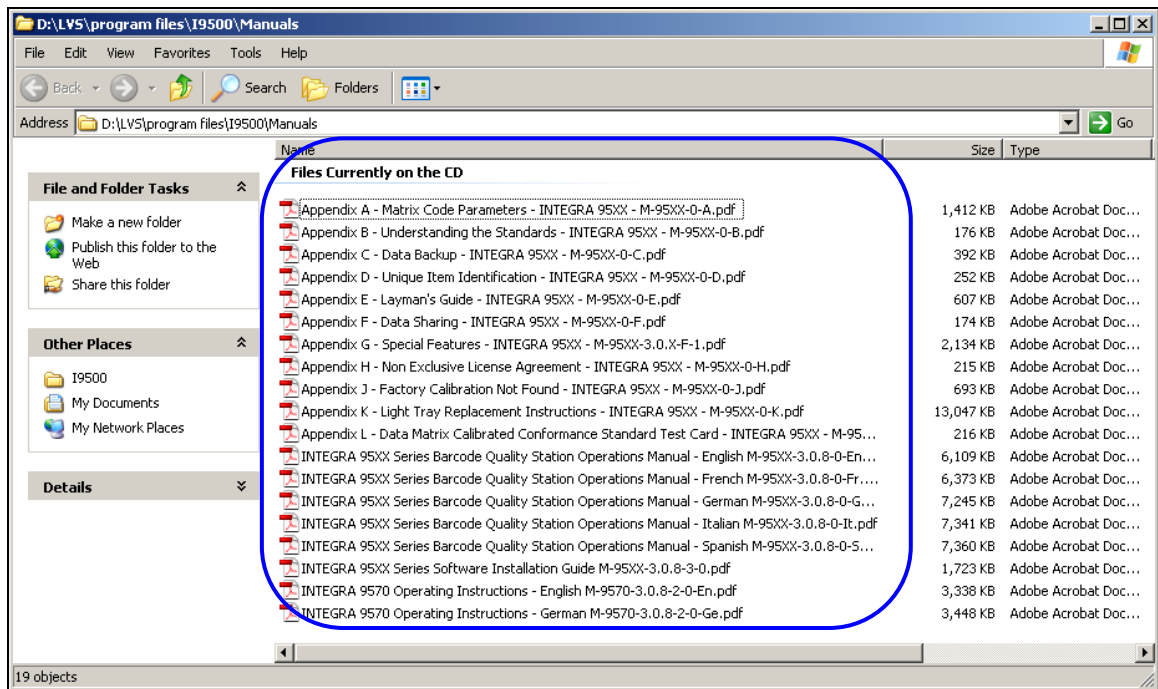


## Windows® 7 Operating Instructions

1. Insert the installation flash drive into the USB port. The following window appears.



2. Click "Open folder to view files."
3. A window opens containing the manuals located on the installation flash drive.



## **Safety Instructions**

The LVS-95XX system has been carefully designed to provide years of safe, reliable performance. However, as with all electrical equipment, there are some basic precautions you should follow to avoid personal injury or damage to the system:

- Before using the system, carefully read all the installation and operating instructions.
- Observe all warning instruction labels on the system.
- Never insert anything into the openings of the system.
- Do not use the system near water or spill liquid into it.
- All components used to create your system are UL and CE approved. All circuits were designed to incorporate maximum safety. However, any equipment using electrical voltages may cause personal injury if improperly handled.
- Do not attempt to work on the system with the main power lines connected.
- Ensure that the AC power source matches the ratings listed for the system. If unsure, check with your dealer or local utility provider.
- Do not place the AC power cord where it can be stepped on. If the AC power cord becomes damaged or frayed, replace it immediately.
- Avoid looking directly into any system lights. If you need to examine the lights, or look at any component near the lights, be sure to first turn off the lights. If the lights cannot be turned off, then wear polarized/UV blocking sunglasses while examining the lights.
- To avoid damaging the system, turn off and unplug the system before cleaning.
- If the system ever needs repair, consult Microscan or your Microscan Distributor.



## Installation Checklist

Please ensure you have the required items listed below before installing the LVS-95XX system. Contact your Microscan sales representative if any items are missing.

- LVS-95XX system
- USB cable
- EAN/UPC NIST traceable Calibrated Conformance Standard Test Card used for calibrating the LVS-95XX system
- Installation flash drive (includes LVS-95XX software and “LVS-95XX Series Barcode Quality Station Operations Manual”
- “LVS-95XX Series Software Installation Guide” (this document)
- Flash Drive (for LVS-9570 systems only). Contains “LVS-9570 Operating Instructions” and demonstration video

**IMPORTANT:** All LVS-95XX systems must use the calibration card and installation flash drive issued with the system. The LVS-95XX system, calibration card and installation flash drive use the same serial number and must be used in conjunction with each other to obtain correct calibration results. Failure to use the calibration card and installation flash drive issued with the system will result in incorrect calibration results.

## Installation Steps – Read Prior to Installation

This section documents the software installation steps for Windows® XP and Windows® 7; thus, you must know which operating system resides on the computer running the LVS-95XX software.

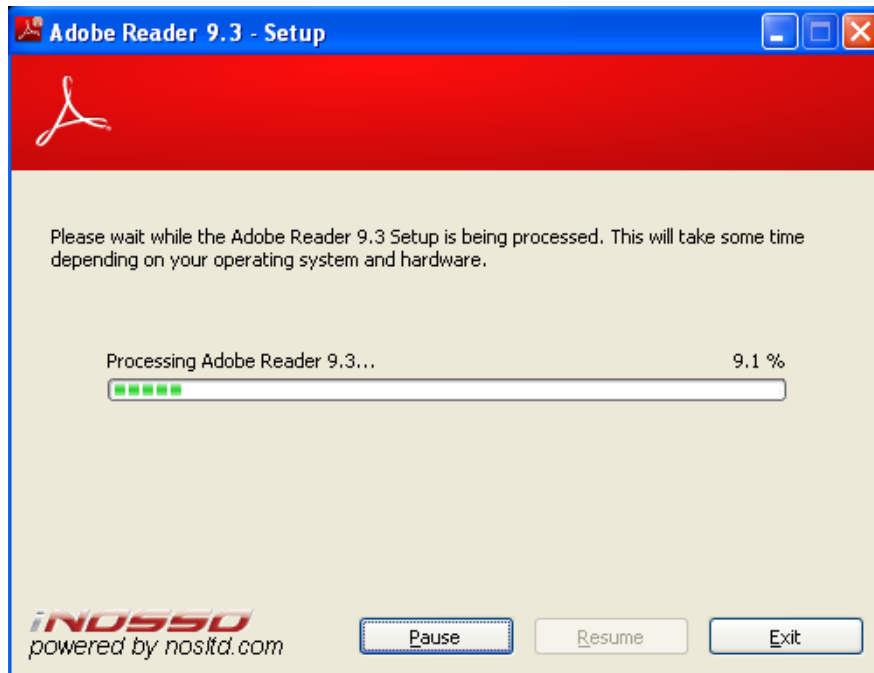
The LVS-95XX software supports Windows® XP and Windows® 7 (32-bit and 64-bit) operating systems. Windows® Vista is not supported.

Before installing the LVS-95XX software, ensure that no USB cables are plugged into the LVS-95XX USB ports. You are directed at a particular step in this guide when to plug in the USB cable.

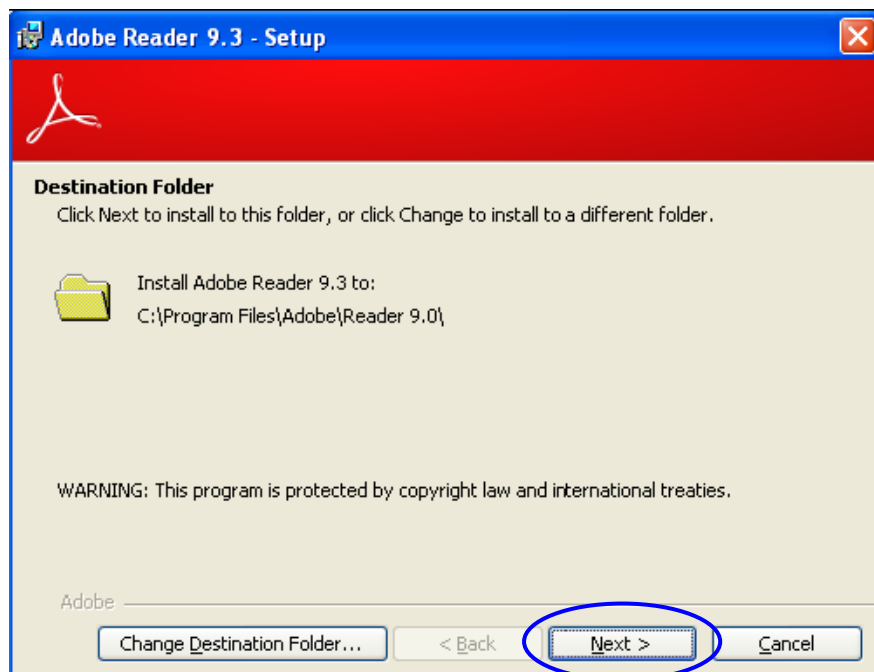
## Windows® XP Installation Steps

Follow the steps below to install the LVS-95XX software on a Windows® XP operating system.

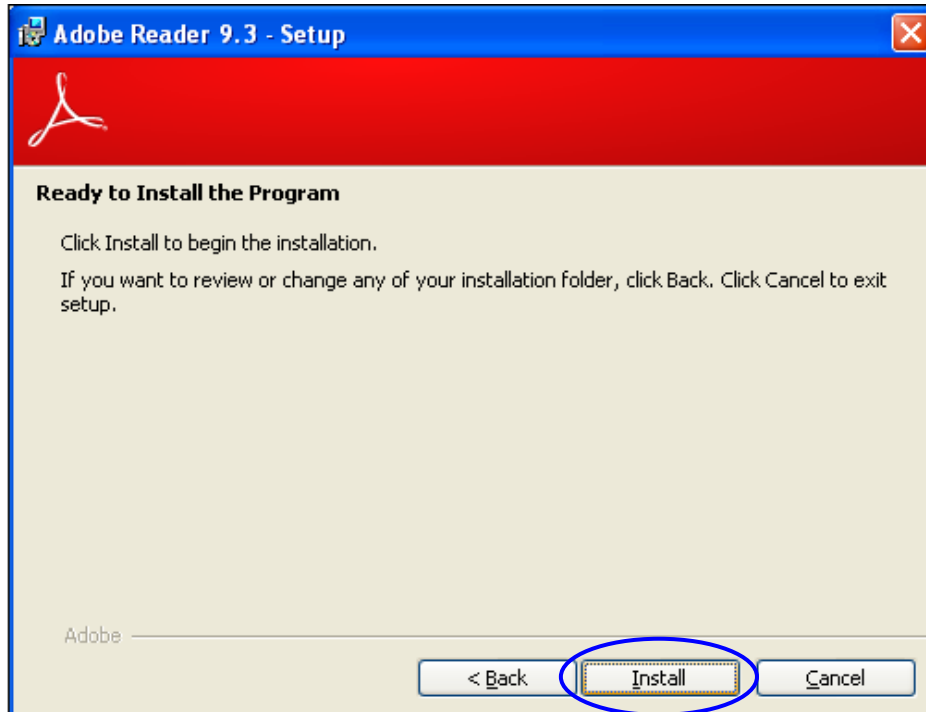
1. Insert the Installation flash drive into the computer's flash drive drive; the following screen appears.  
If Adobe Reader is already installed in the following folder, then the remaining Adobe Reader Setup screens will not appear: C:\Program Files\Adobe\Reader 9.0



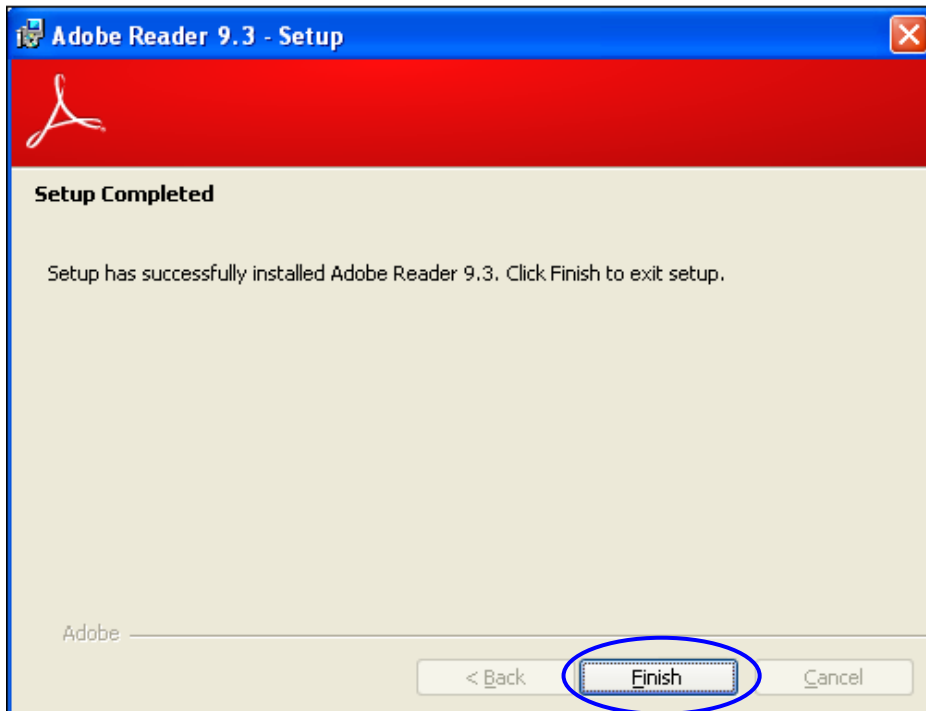
2. When the following screen appears, click "Next" to install Adobe Reader to the designated folder, or click "Change Destination Folder" to install to a different folder.



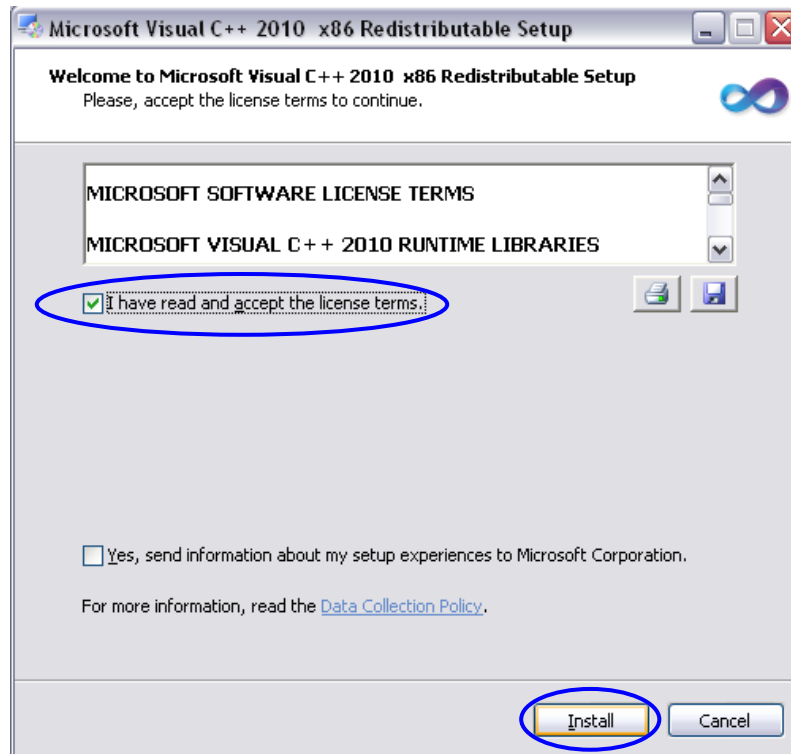
3. Click "Install" to begin installation.



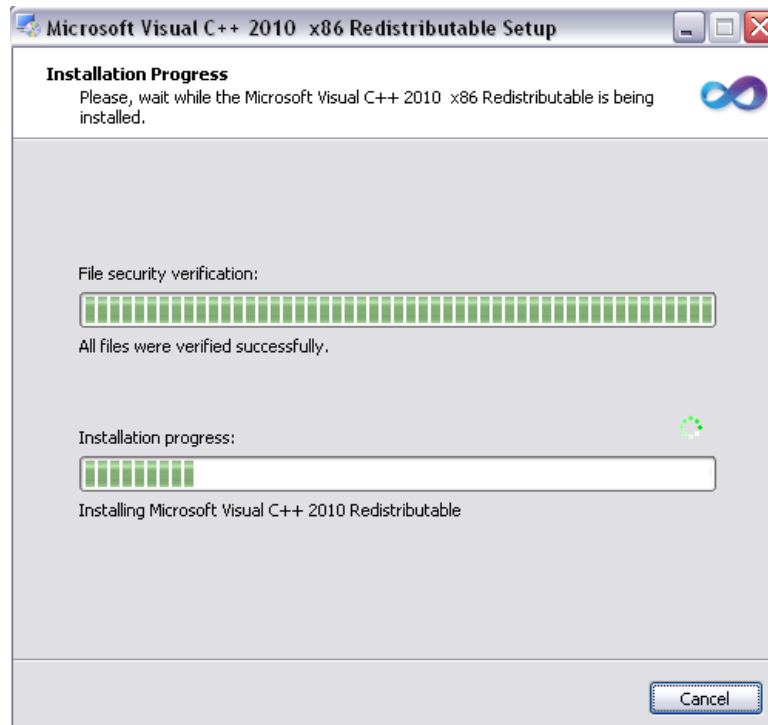
4. The following screen appears when Adobe Reader successfully installs. Click "Finish."



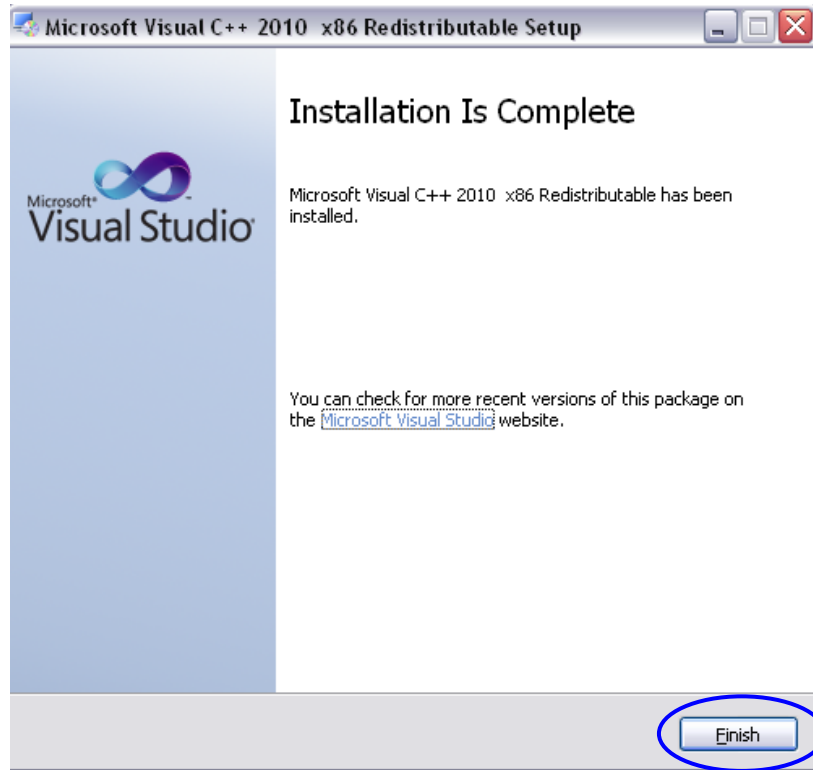
5. The “Microsoft Visual C++ 2010 x86 Redistributable Setup” screen appears. Select the checkbox entitled “I have read and accept the license terms” and then click “Install.”



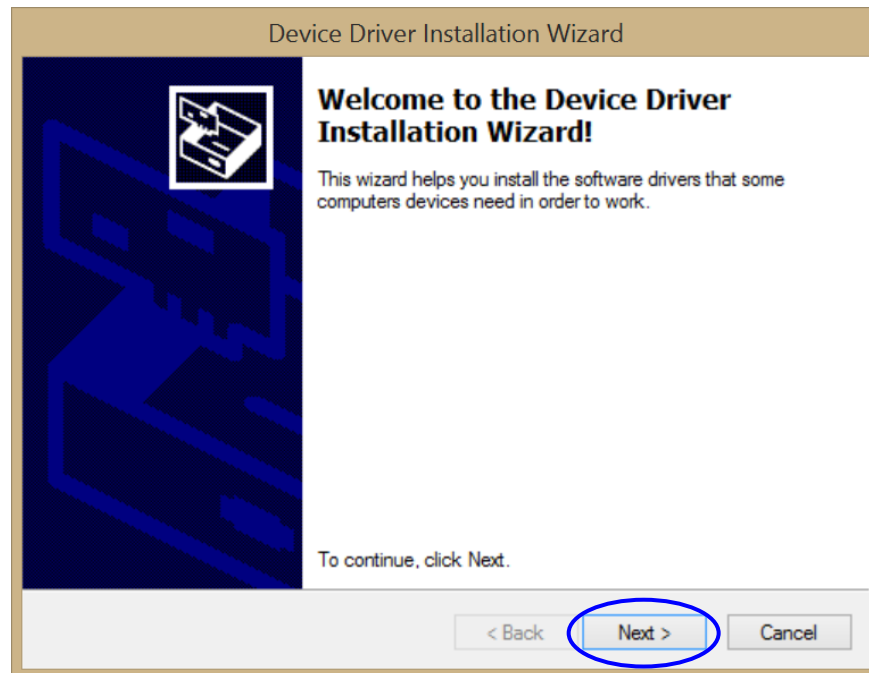
6. The following screen appears indicating that the Microsoft Visual C++ 2010 x86 Redistributable is installing.



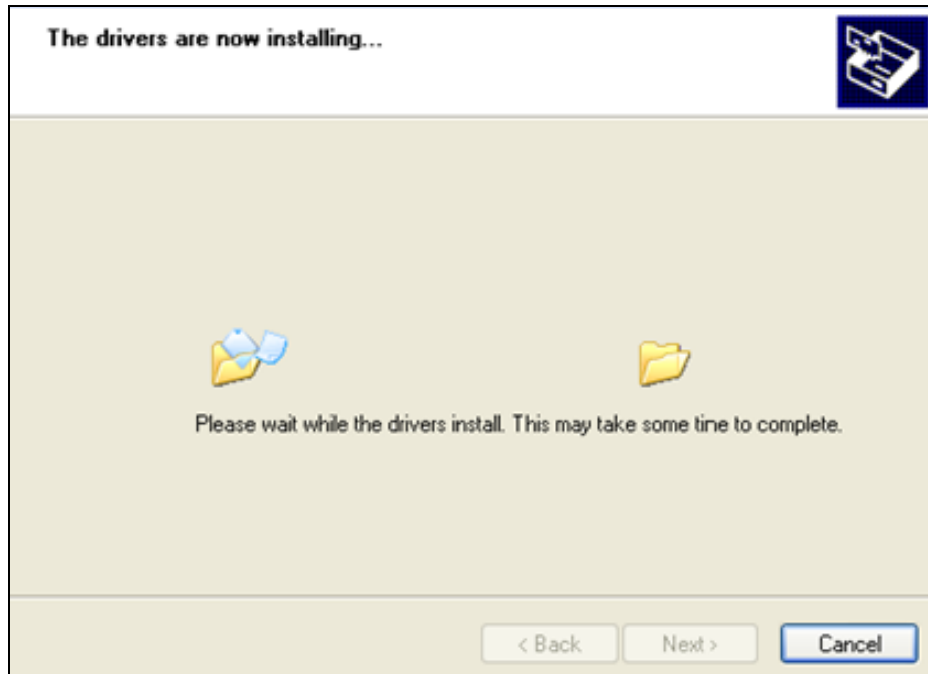
7. When installation is complete, the following screen appears. Click “Finish.”



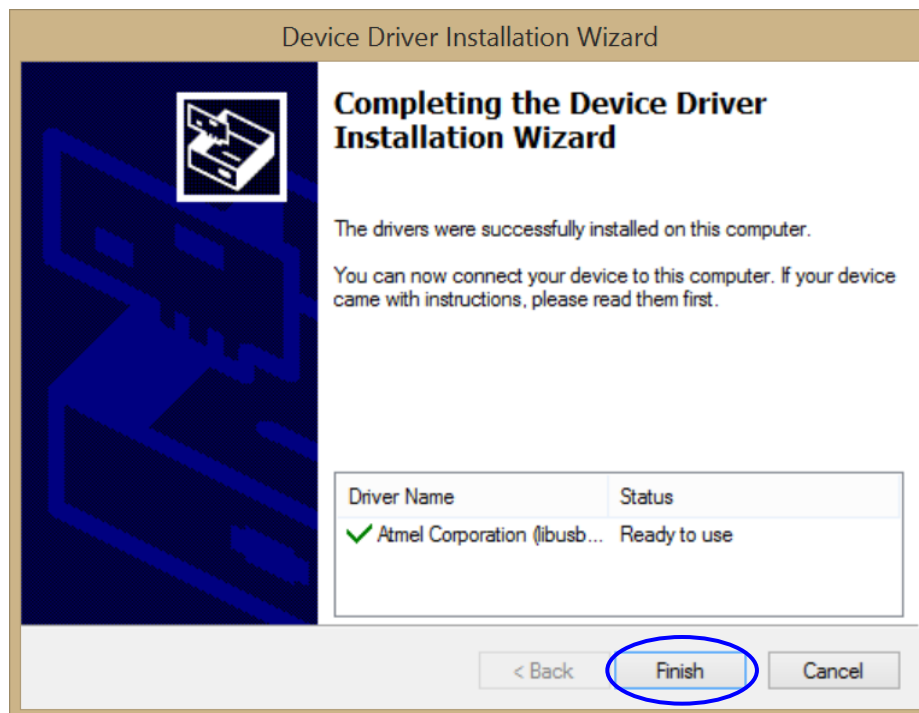
8. The “Welcome to the Device Driver Installation Wizard” appears indicating software drivers will install. Click “Next.”



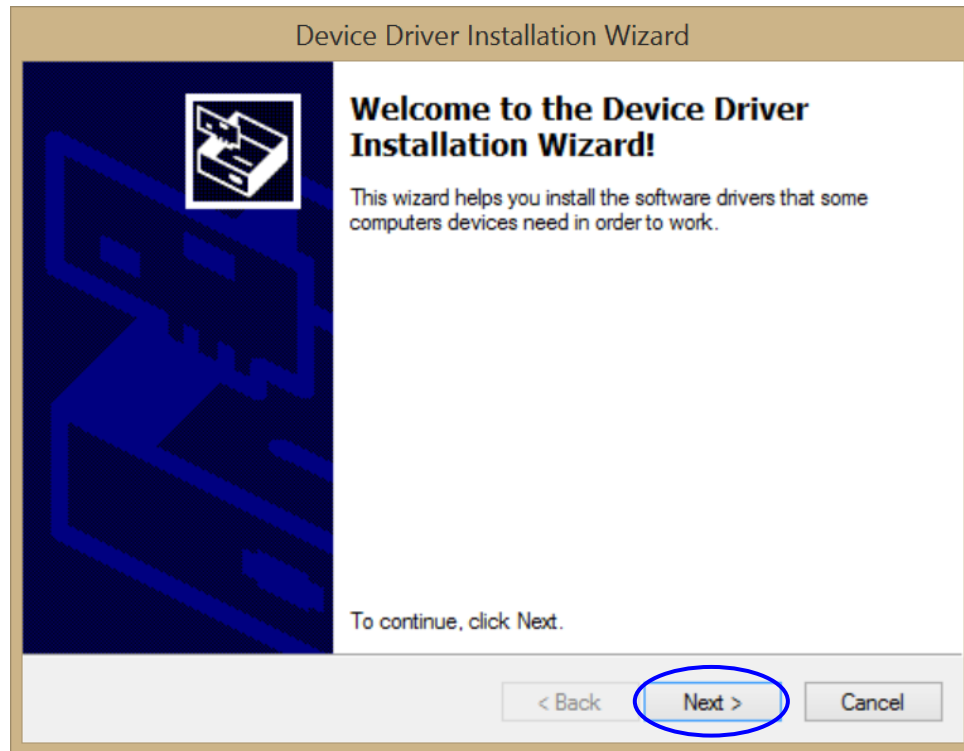
9. The following screen appears indicating drivers are installing.



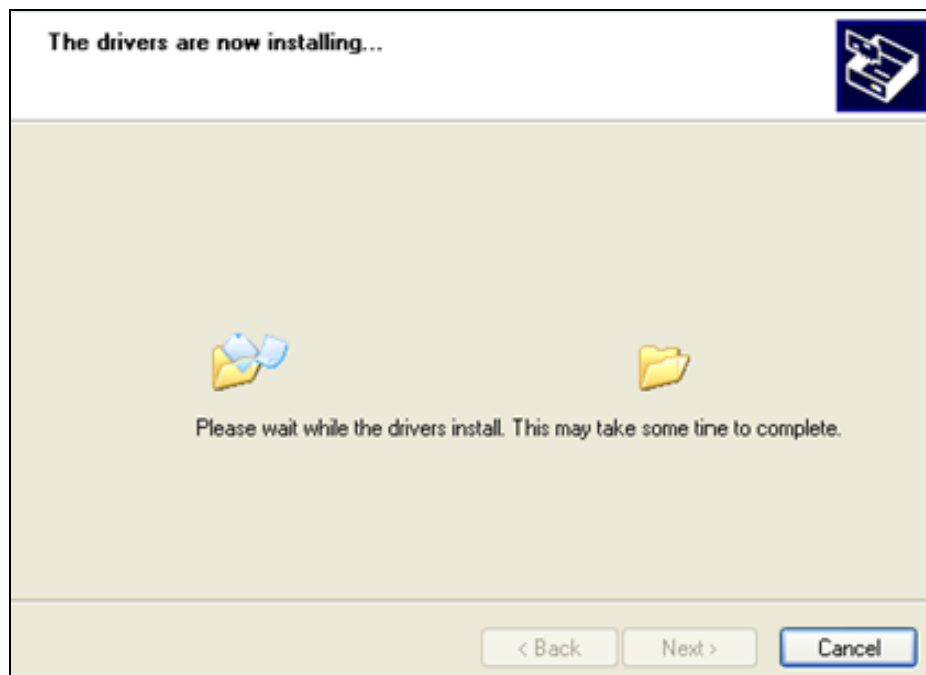
10. The "Completing the Device Driver Installation Wizard" appears. Click "Finish."



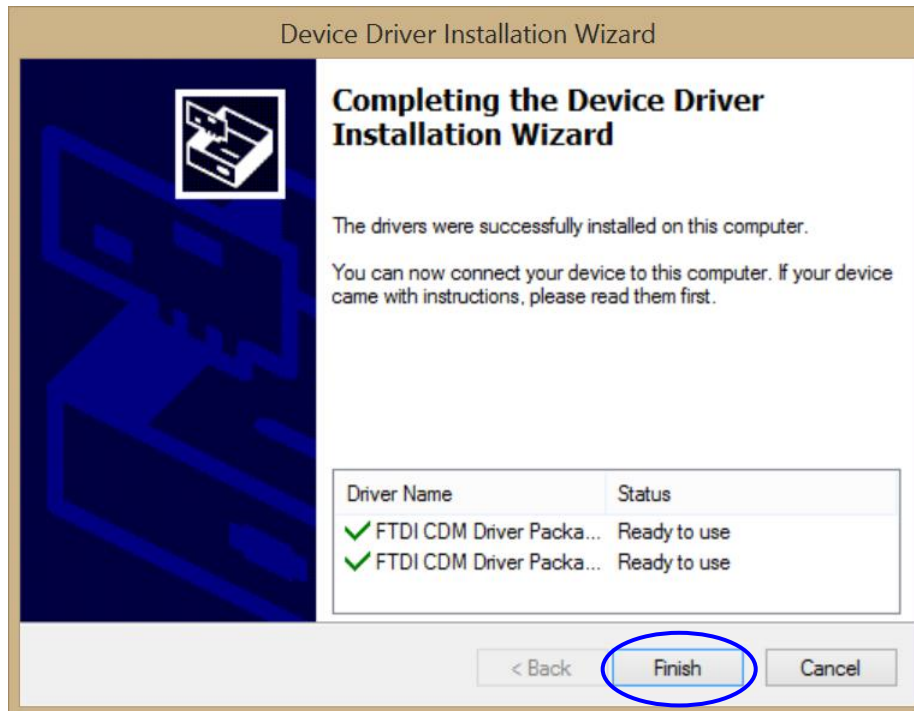
11. The “Welcome to the Device Driver Installation Wizard” appears indicating software drivers will install. Click “Next.”



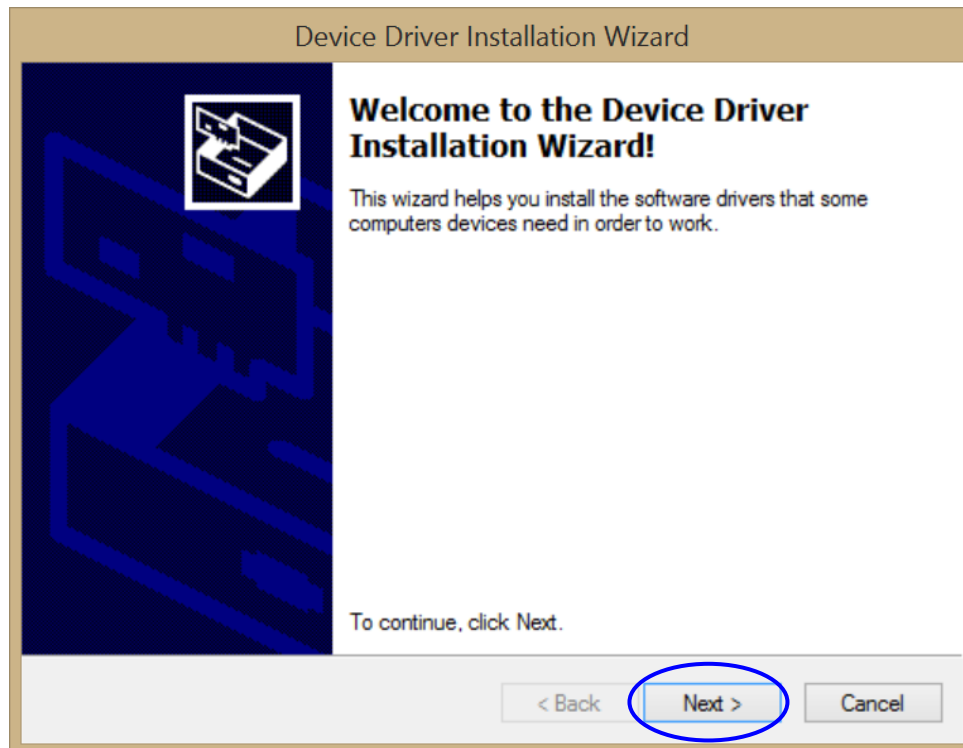
12. The following screen appears indicating drivers are installing.



13. The “Completing the Device Driver Installation Wizard” appears indicating the drivers successfully installed. Click “Finish.”

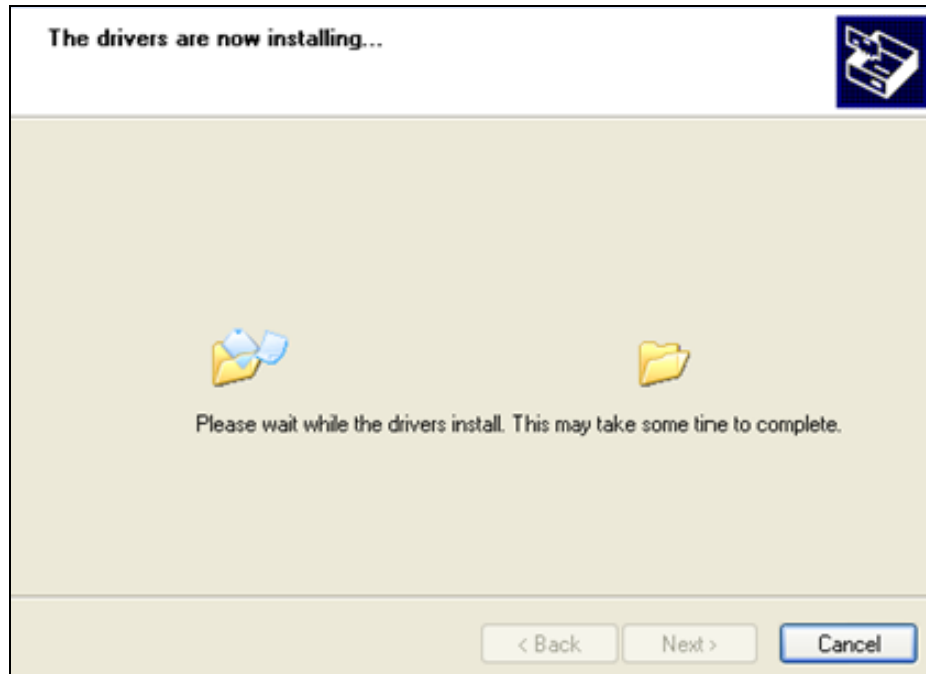


14. The “Welcome to the Device Driver Installation Wizard” appears indicating software drivers will install. Click “Next.”

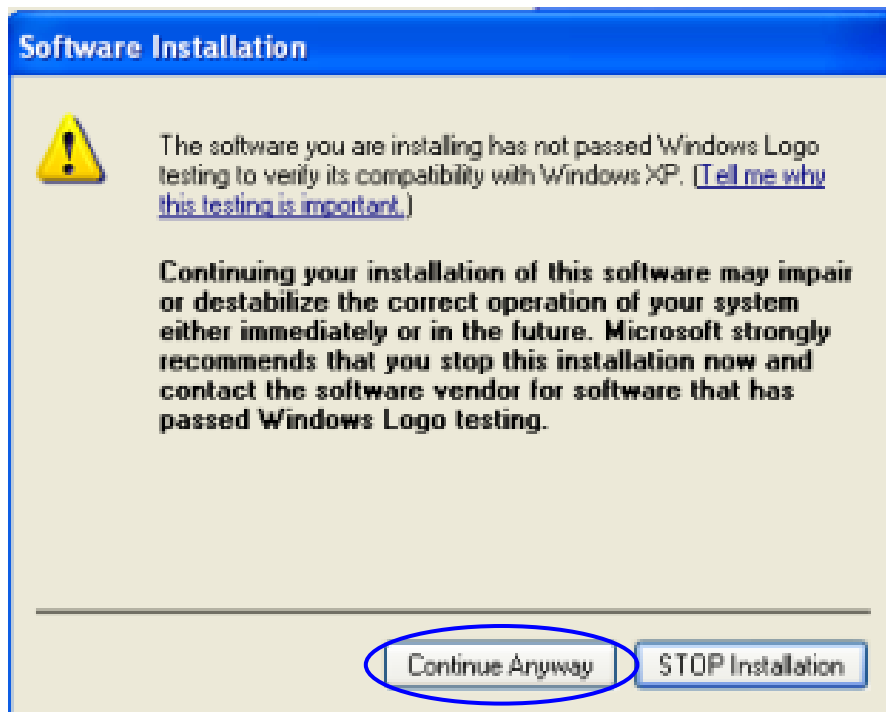




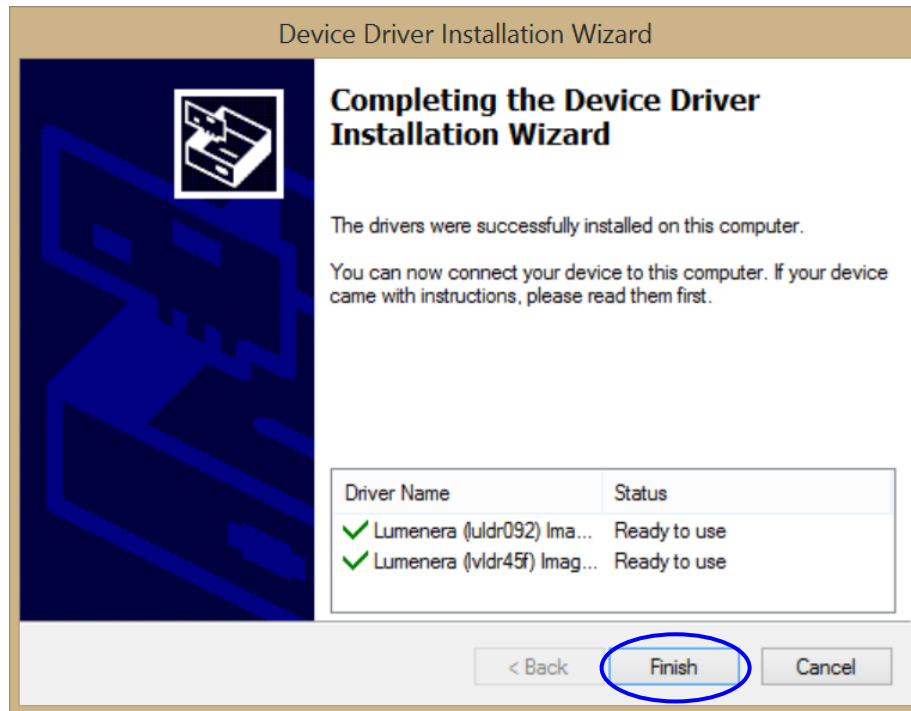
15. The following screen appears indicating drivers are installing.



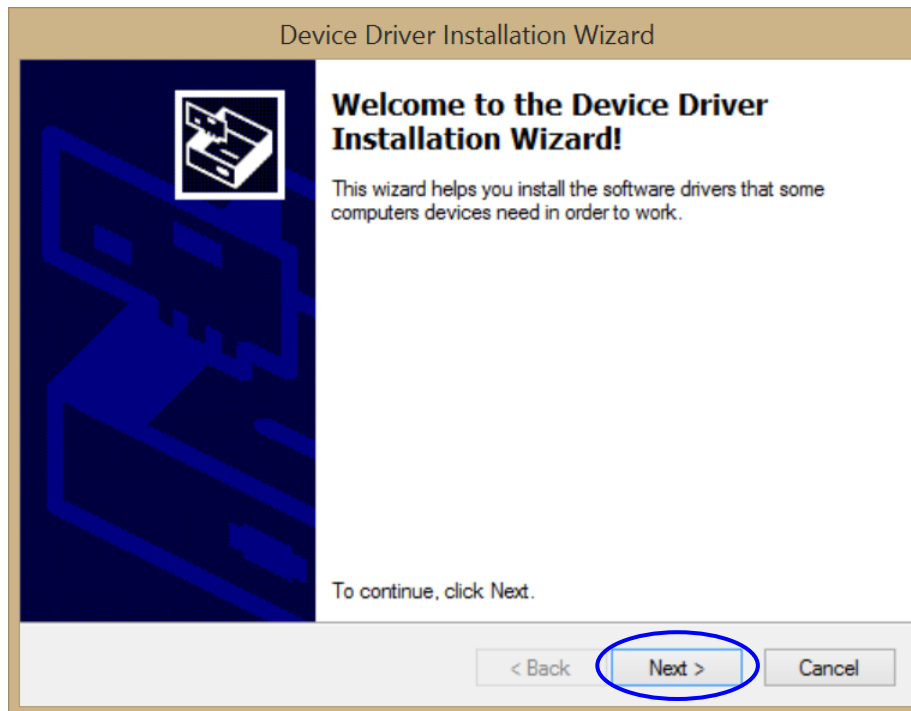
16. When the following message appears, click "Continue Anyway." The message re-appears; click "Continue Anyway" again.



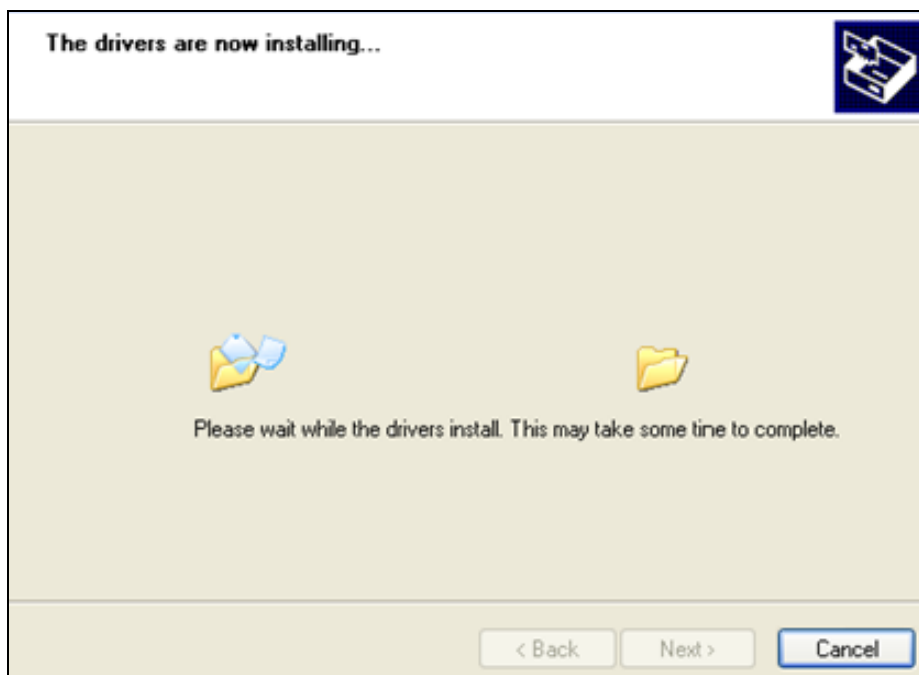
17. The following screen appears indicating the Lumenera camera drivers successfully installed. Click "Finish."



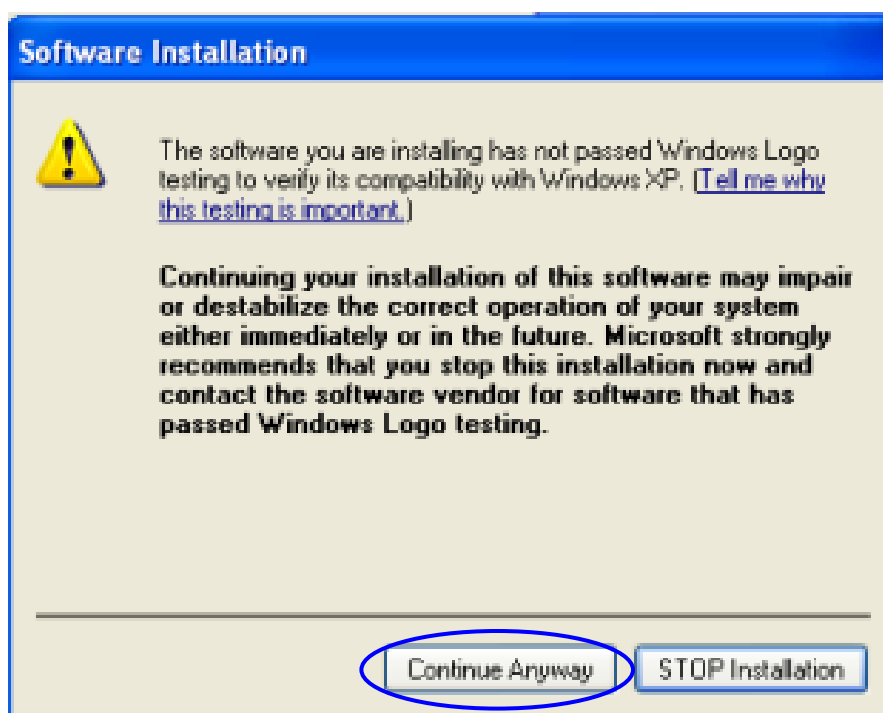
18. The "Welcome to the Device Driver Installation Wizard" appears indicating software drivers will install. Click "Next."



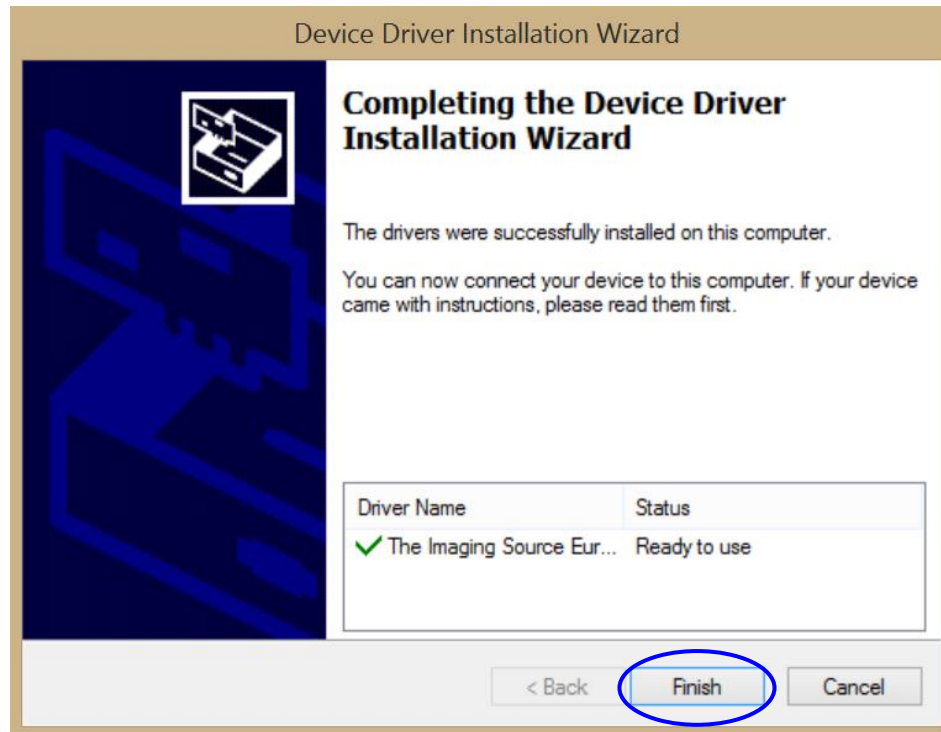
19. The following screen appears indicating drivers are installing.



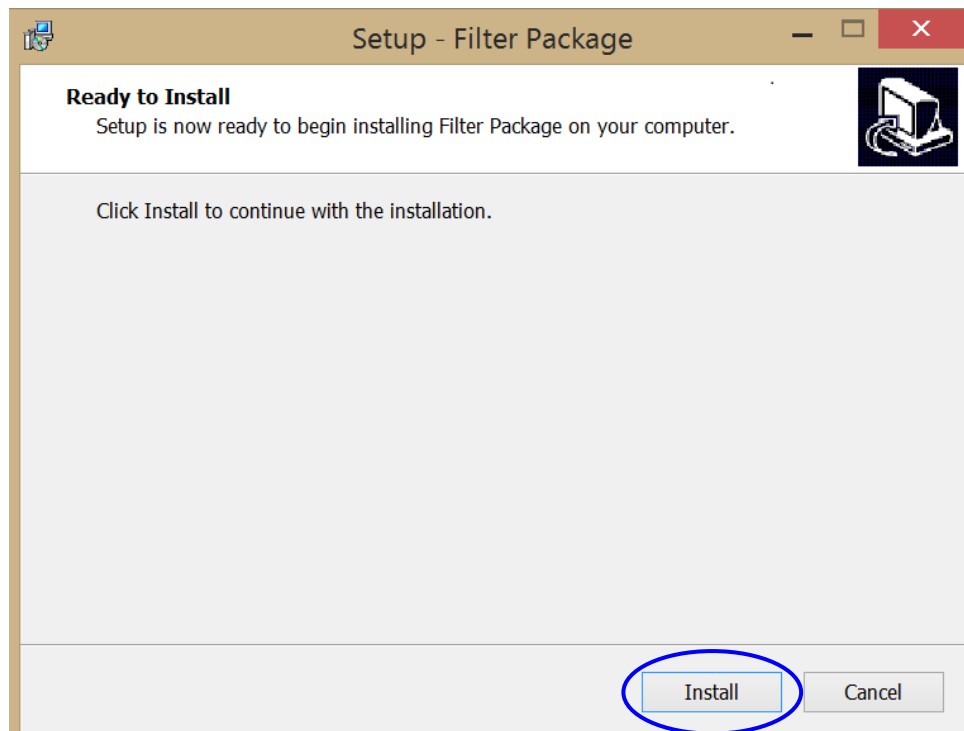
20. When the following message appears, click "Continue Anyway."



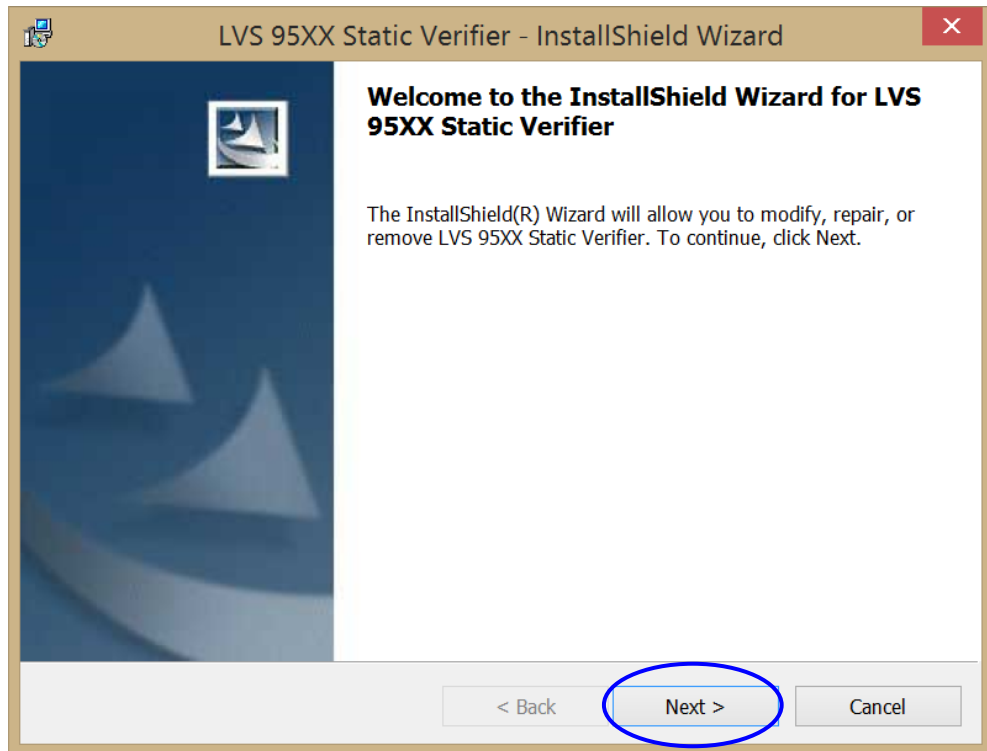
21. The “Completing the Device Driver Installation Wizard” appears indicating the Imaging Source driver successfully installed. Click “Finish.”



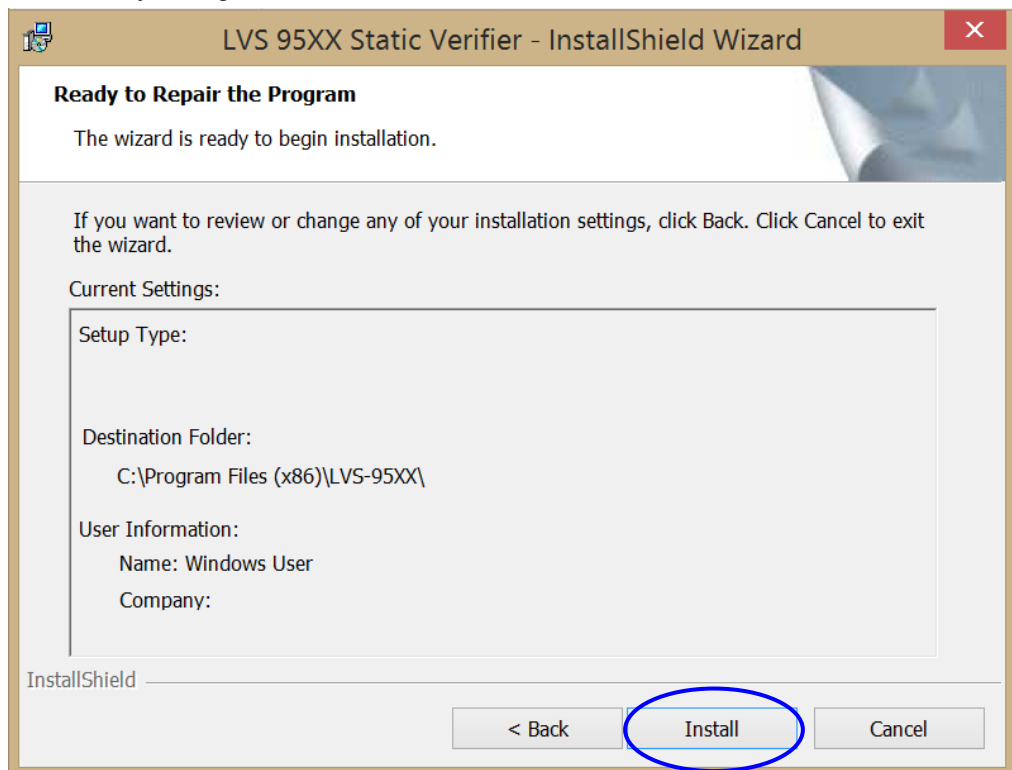
22. The “Ready to Install” screen appears indicating the Filter Package will install on your computer. Click “Install.”



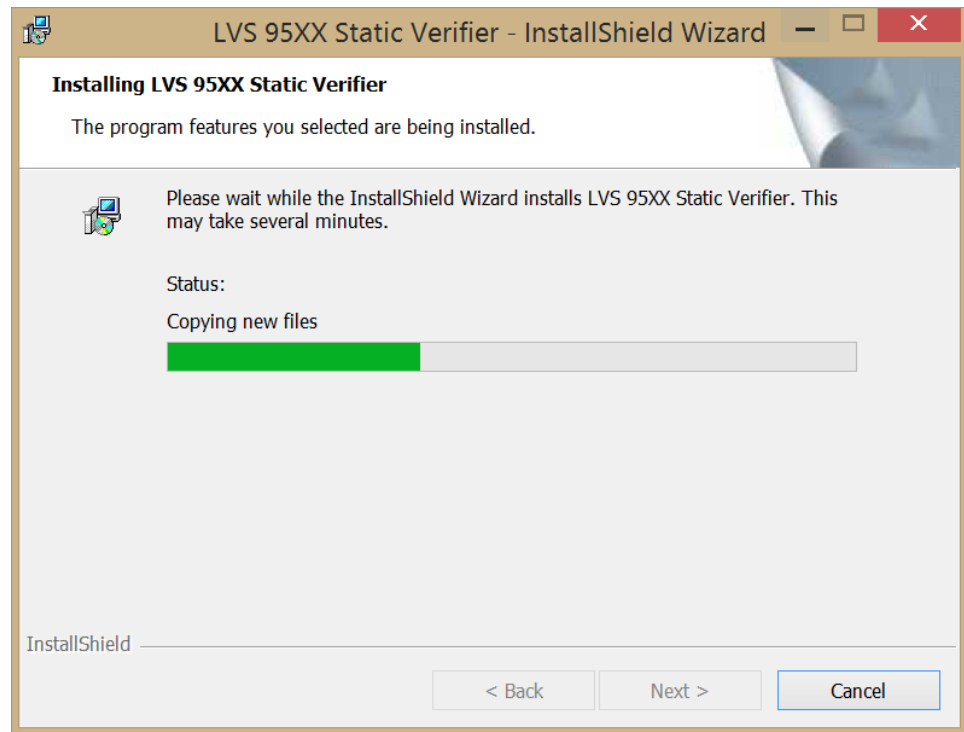
23. The “LVS-95XX Static Verifier – InstallShield Wizard” screen appears which allows you to modify, repair, or remove the LVS-95XX Static Verifier. Click “Next.”



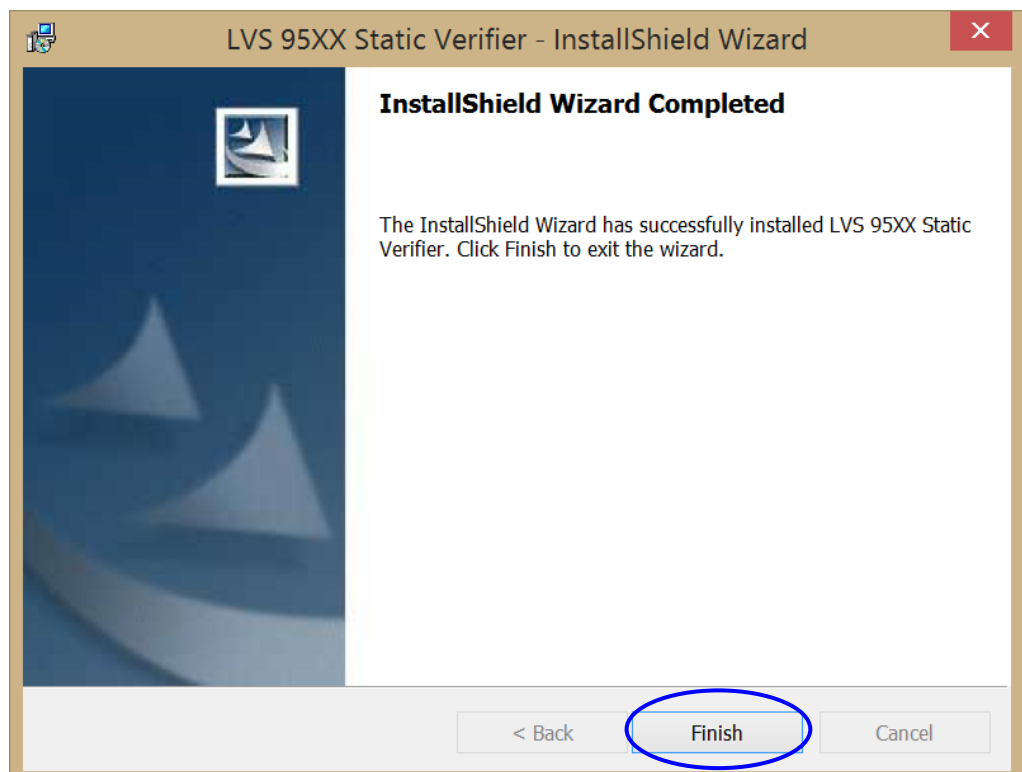
24. The wizard is ready to begin installation. Click “Install.”



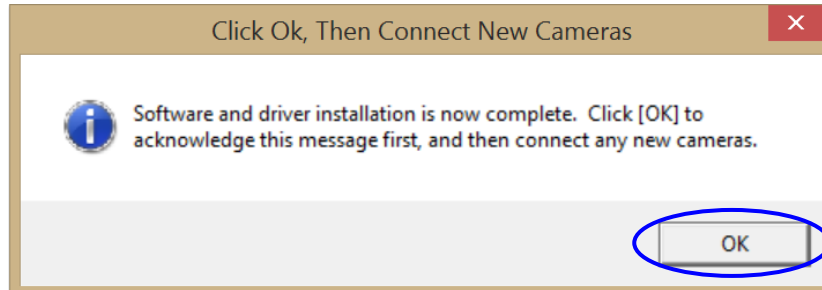
25. The following screen appears indicating the LVS-95XX Static Verifier is installing.



26. The following screen appears when installation of the LVS-95XX Static Verifier is complete. Click "Finish."



27. When the following message appears, click “OK.”



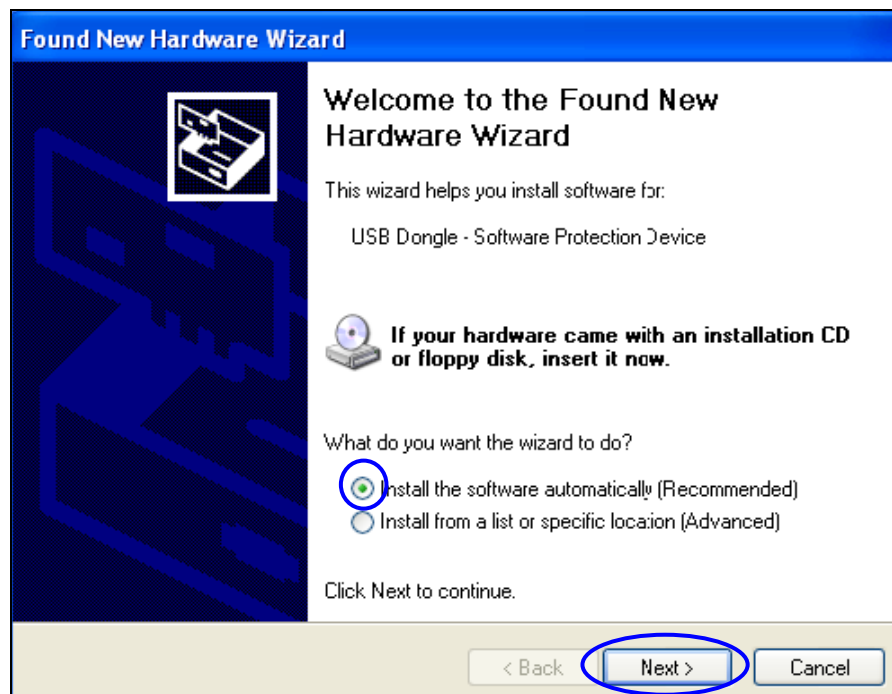
28. Using the supplied USB cable, insert one end of the USB cable into the computer's USB port; insert the other end of the USB cable into the USB port on the LVS-95XX verifier.

**IMPORTANT:** The LVS-9570 must connect to a dedicated USB port on the computer; the LVS-9570 cannot connect to an external USB Hub unless the Hub is externally powered. Failure to comply with these rules results in abnormal contrast readings.

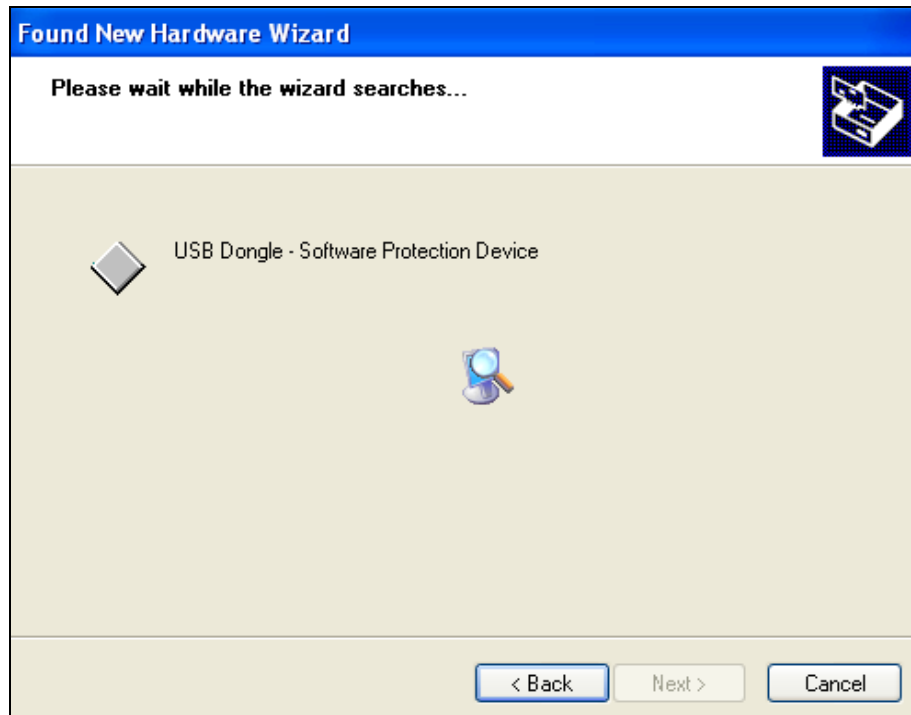
**Tip:** A green light on the back of the LVS-9570 turns on after the LVS-95XX software is installed.

**IMPORTANT:** Steps 29 through 34 may appear in any order.

29. The “Welcome to the Found New Hardware Wizard” appears indicating the USB dongle software will install. Make sure the option “Install the software automatically (Recommended)” is selected, and then click “Next.”



30. The following screen appears indicating to wait while the wizard searches for the USB dongle software protection device.

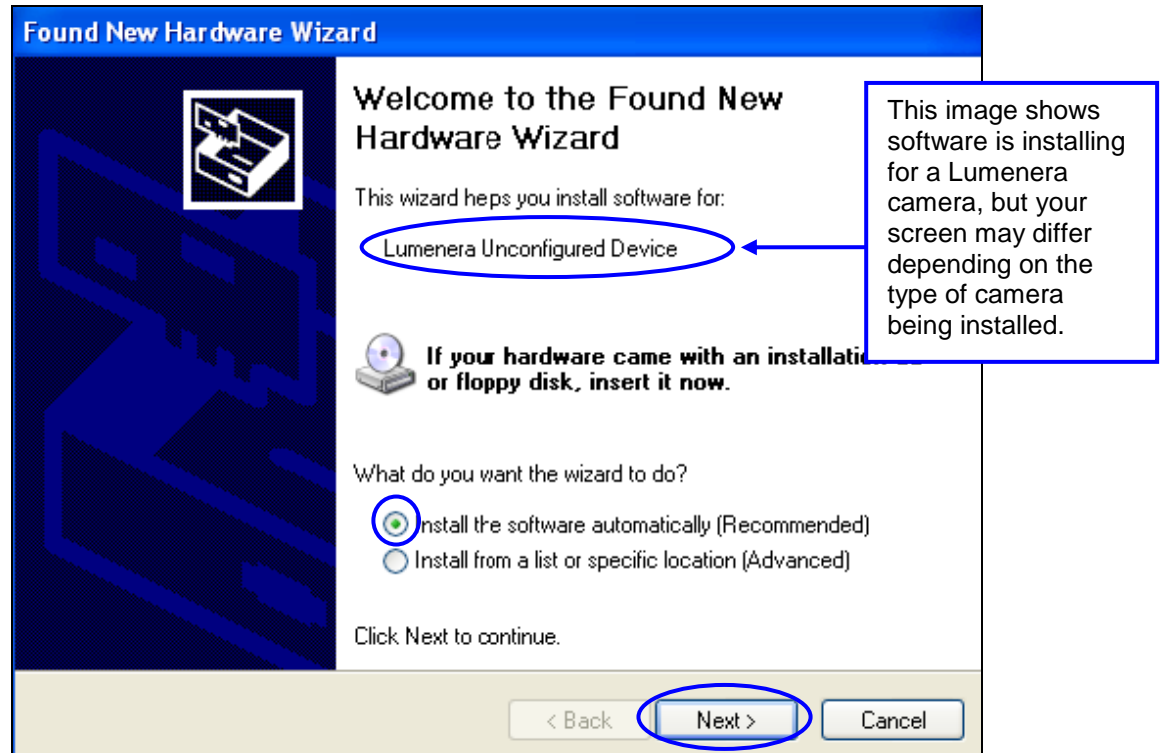


31. The following screen appears indicating the USB dongle software successfully installed. Click "Finish."

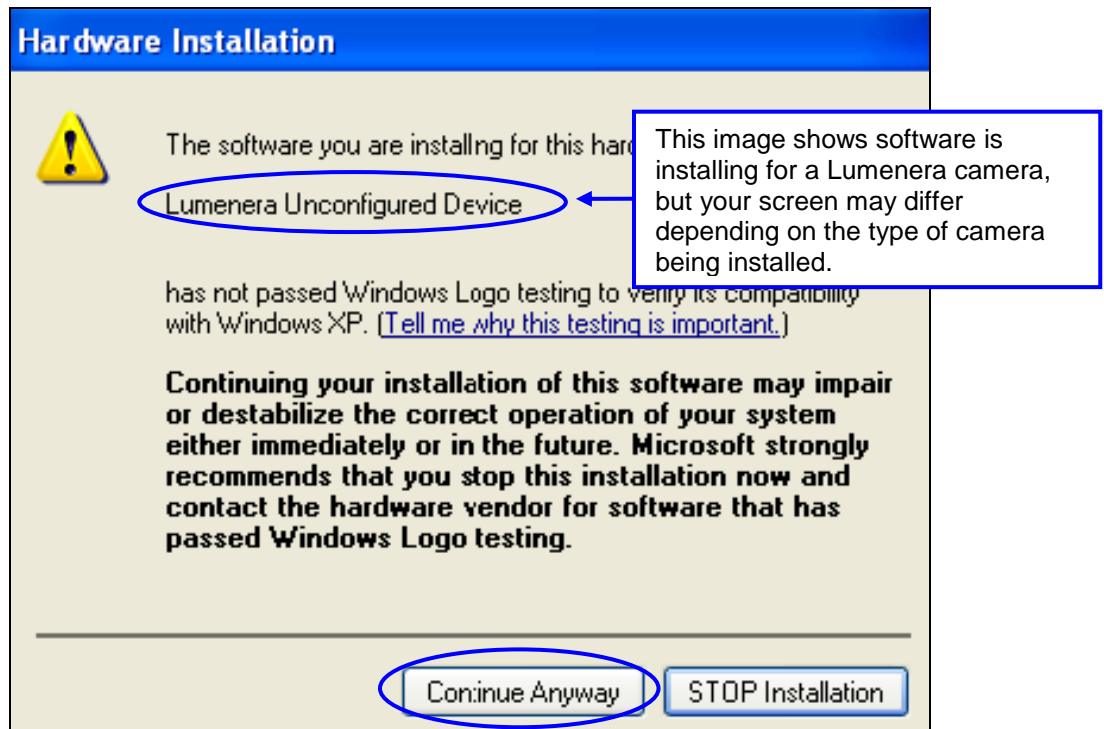




32. The “Welcome to the Found New Hardware Wizard” appears indicating software will install for the system’s camera. Ensure “Install the software automatically (Recommended)” is selected, and then click “Next.”



33. When the following message appears, click “Continue Anyway.”

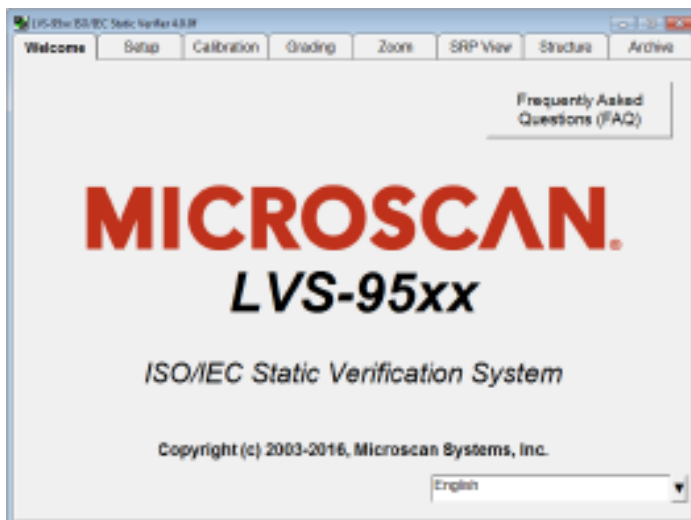


34. The “Completing the Found New Hardware Wizard” appears indicating the software is installed for the system’s camera. Click “Finish.”

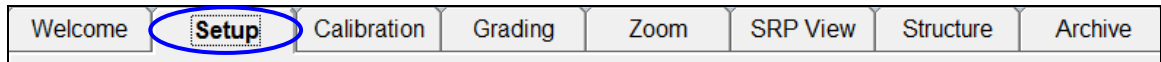


35. If a Lumenera camera is being installed, the above steps will appear twice. Always click the screen defaults.  
 36. Remove the Installation flash drive from the USB port.  
 37. Restart the computer.  
 38. The “Welcome” screen automatically appears if the software loaded correctly.

If the software did not load correctly, contact your Microscan Distributor or Microscan technical support at +425-203-4841 or e-mail [helpdesk@microscan.com](mailto:helpdesk@microscan.com).



39. Click the "Setup" tab. The "Login" box appears. Enter "admin" (not case sensitive) in the "Operator ID" field and "admin" (not case sensitive) in the "Password" field, and then click "OK."



40. Within the "Camera" section, select the desired camera. Your options may look differently depending on which cameras are being utilized.

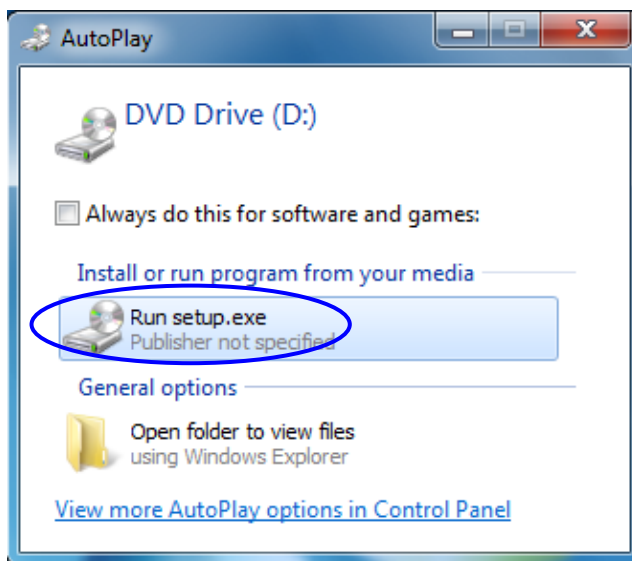


41. Installation is complete. The system you are using must now be calibrated. Read the information below for next steps.
- **LVS-9570 Systems:** Calibration steps are outlined in the following guides:
    - "LVS-9570 Operating Instructions" guide (see "LVS-95XX Software Steps" section). This manual is located on the Installation flash drive and on the flash drive supplied with your LVS-9570 system.
    - "LVS-95XX Series Barcode Quality Station Operations Manual" (see "Calibration Tab" section). This manual is located on the Installation flash drive supplied with your system.
  - **LVS-9580 Systems:** Calibration steps are outlined in the following guides:
    - "LVS-9580 Operating Instructions" guide (see "LVS-95XX Software Steps" section). This manual is located on the Installation flash drive supplied with your LVS-9580 system.
    - "LVS-95XX Series Barcode Quality Station Operations Manual" (see "Calibration Tab" section). This manual is located on the Installation flash drive supplied with your system.
  - **LVS-9510 Systems:** Calibration steps are outlined in the "LVS-95XX Series Barcode Quality Station Operations Manual" (see "Calibration Tab" section). This manual is located on the Installation flash drive supplied with your system.

## Windows® 7 Installation Steps

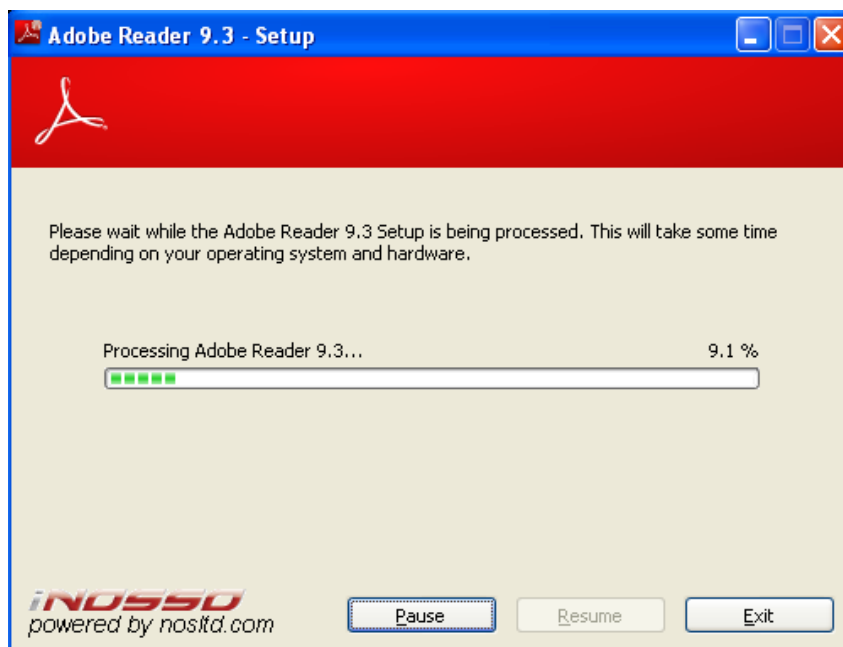
Follow the steps below to install the LVS-95XX software on a Windows® 7 operating system.

1. Insert the Installation flash drive into the computer's USB port. The following screen appears. Click "Run setup.exe."

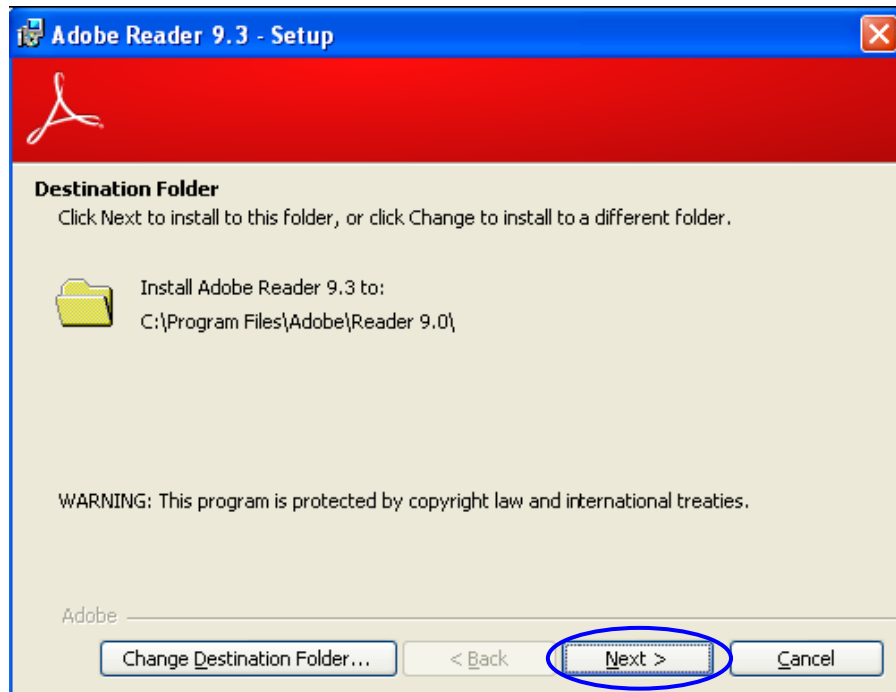


2. Select "Yes" when asked, "Do you want to allow the following program from an unknown publisher to make changes to this computer?"
3. The following screen appears indicating Adobe Reader 9.3 is processing.

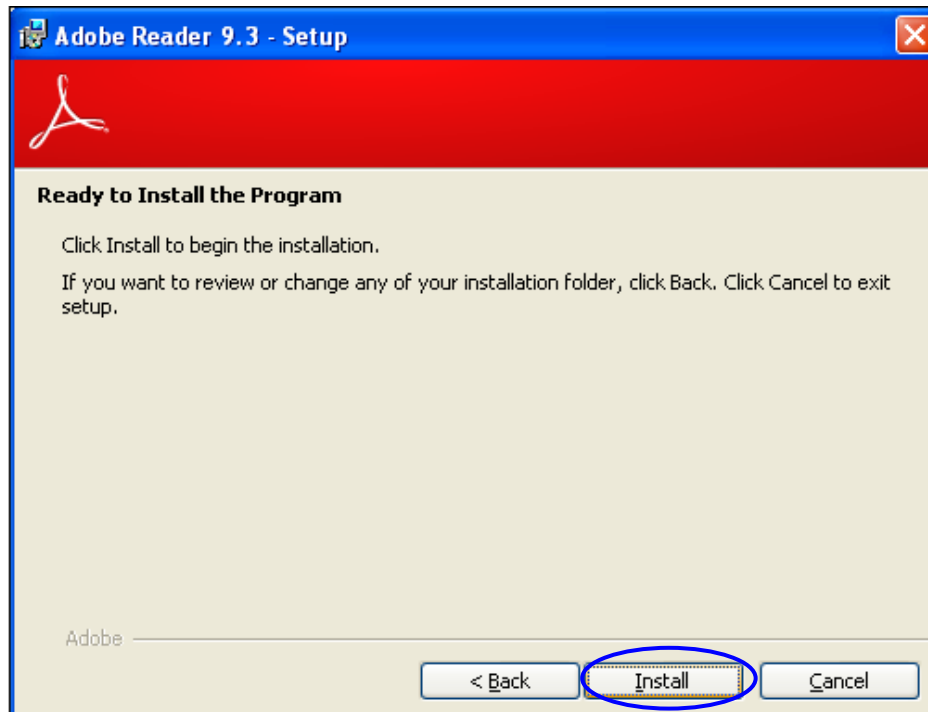
**IMPORTANT:** If Adobe Reader is already installed in the following folder, then the remaining Adobe Reader Setup screens will not appear: C:\Program Files\Adobe\Reader 9.0



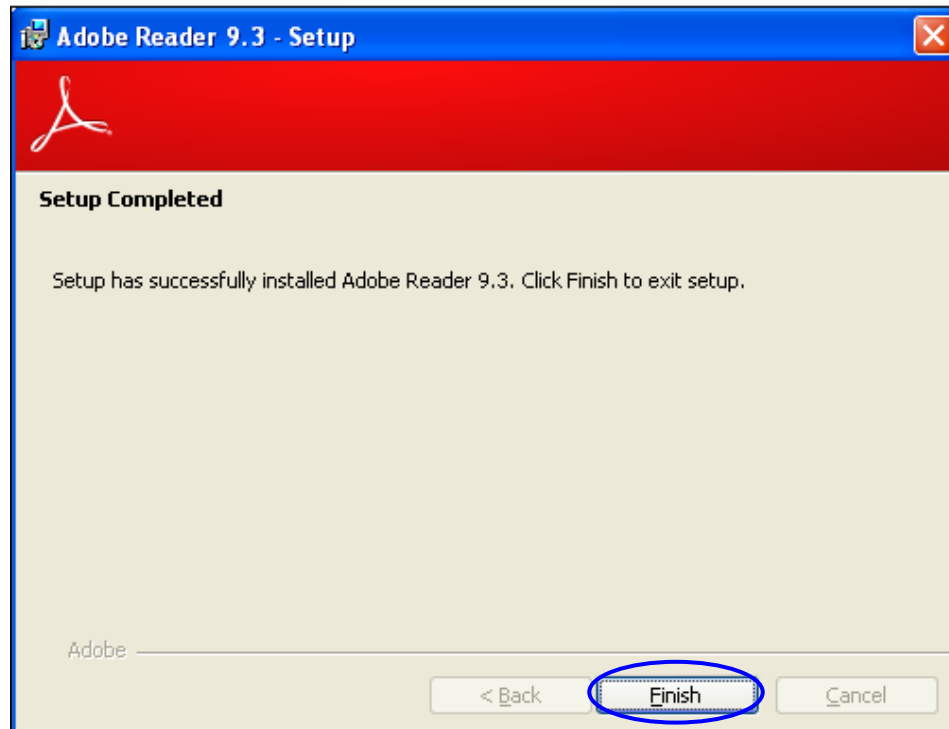
- When the following screen appears, click "Next" to install Adobe Reader to the designated folder, or click "Change Destination Folder" to install to a different folder.



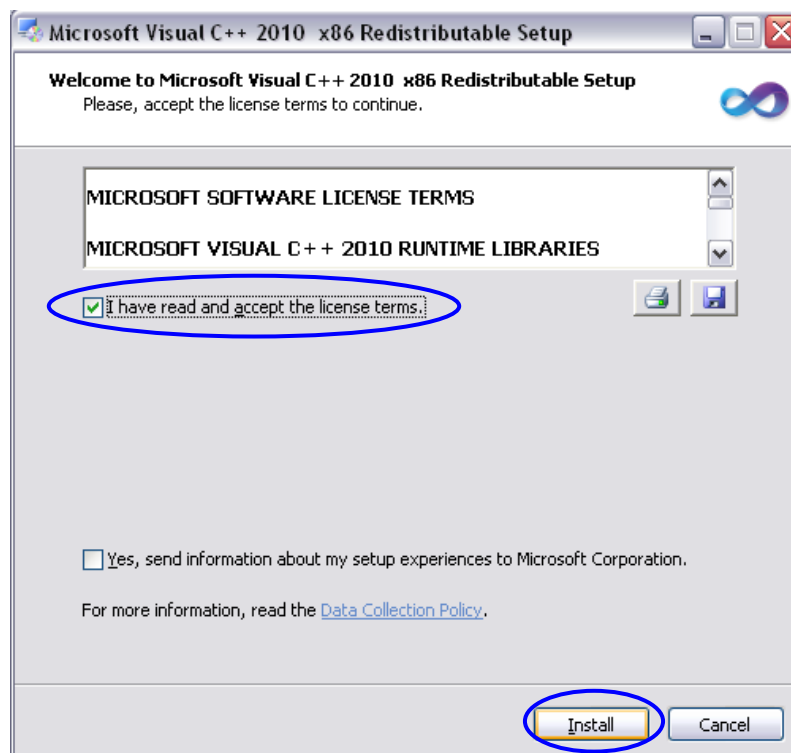
- Click "Install" to begin installation.



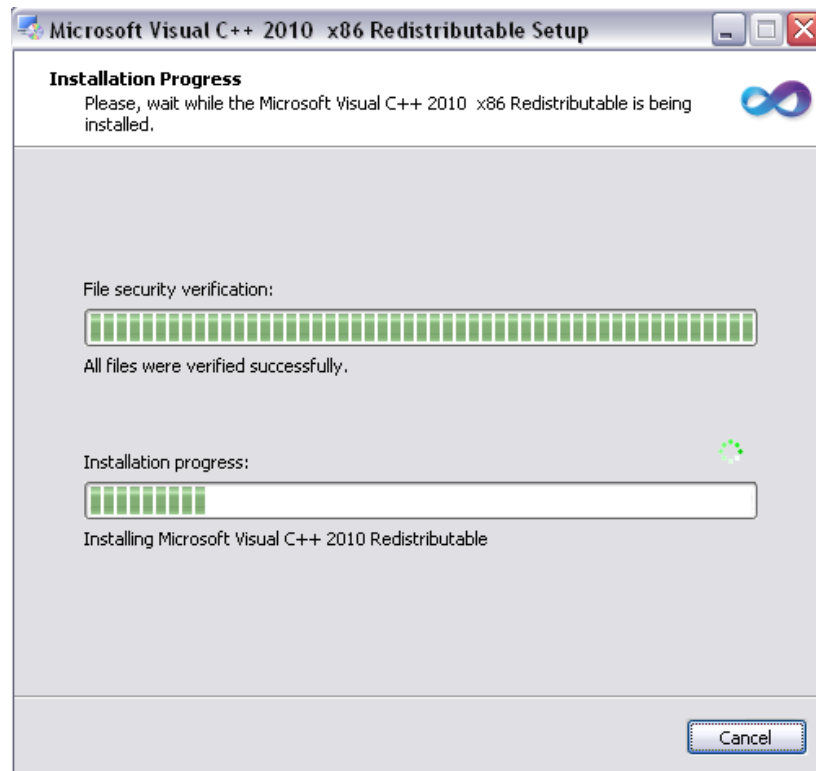
6. The following screen appears when Adobe Reader successfully installs. Click “Finish.”



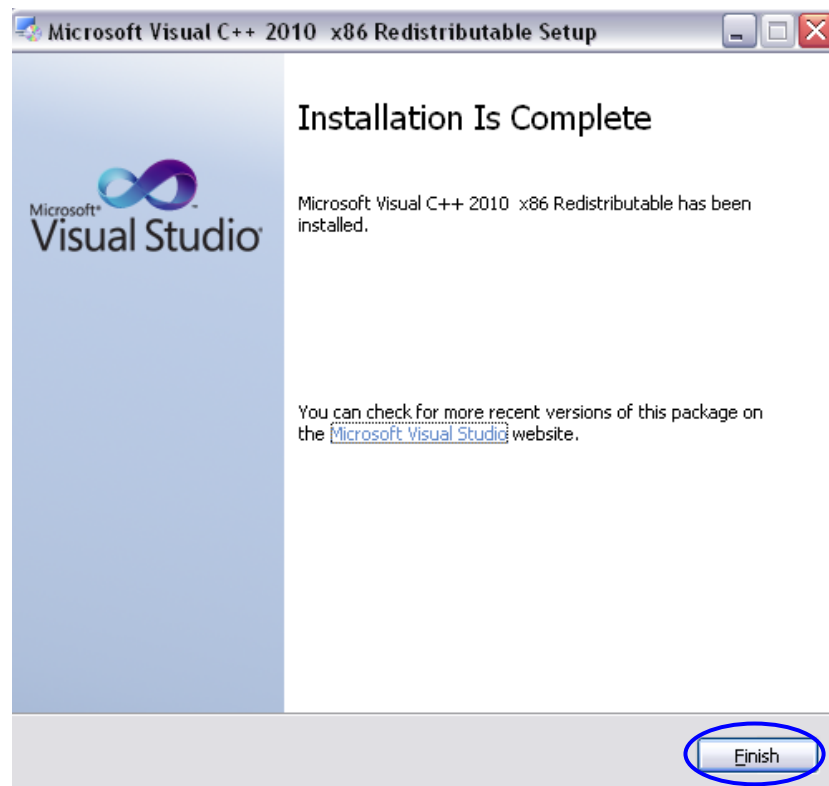
7. The “Microsoft Visual C++ 2010 x86 Redistributable Setup” screen appears. Select the checkbox entitled “I have read and accept the license terms” and then click “Install.”



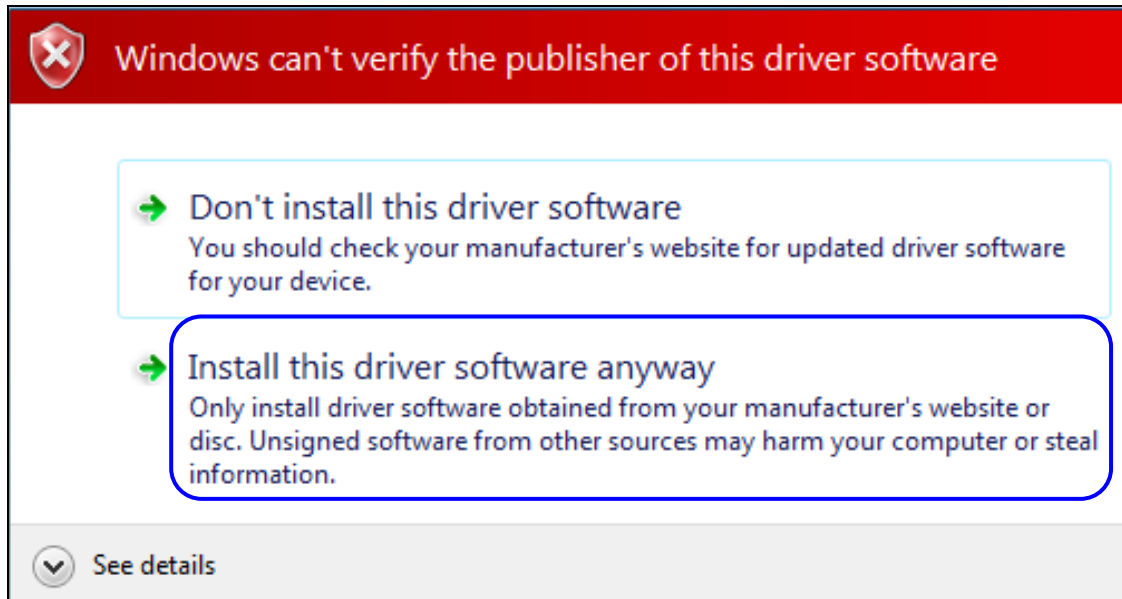
8. The following screen appears indicating Microsoft Visual C++ 2010 x86 Redistributable is installing.



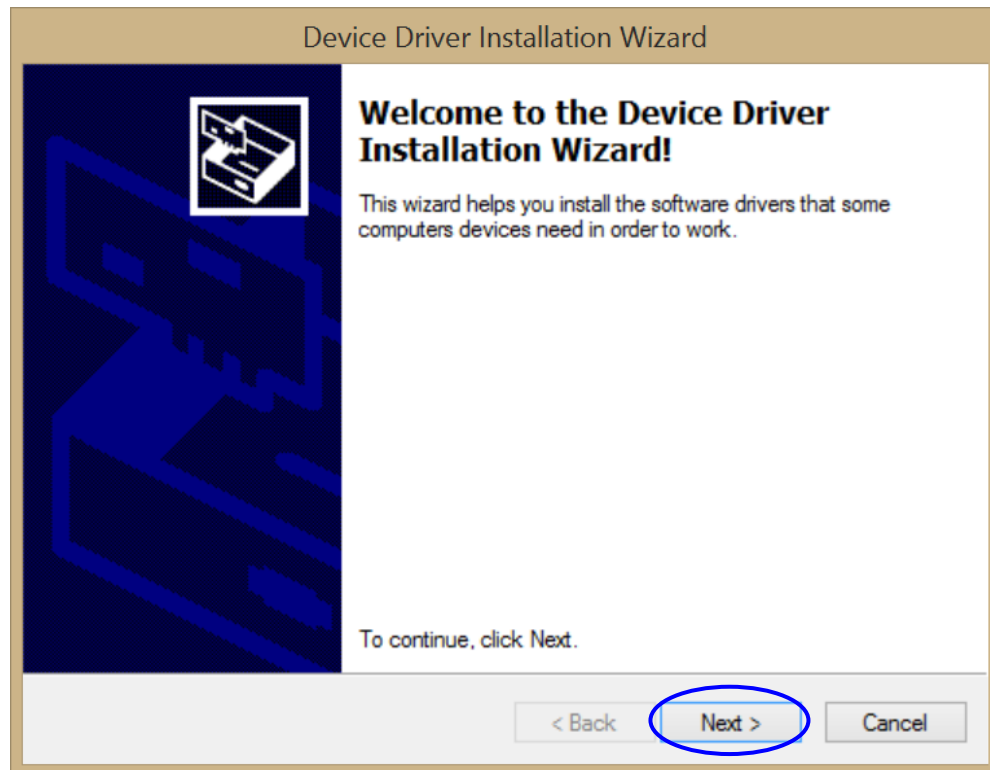
9. When installation is complete, the following screen appears. Click "Finish."



10. When the following message appears, click “Install this driver software anyway.”

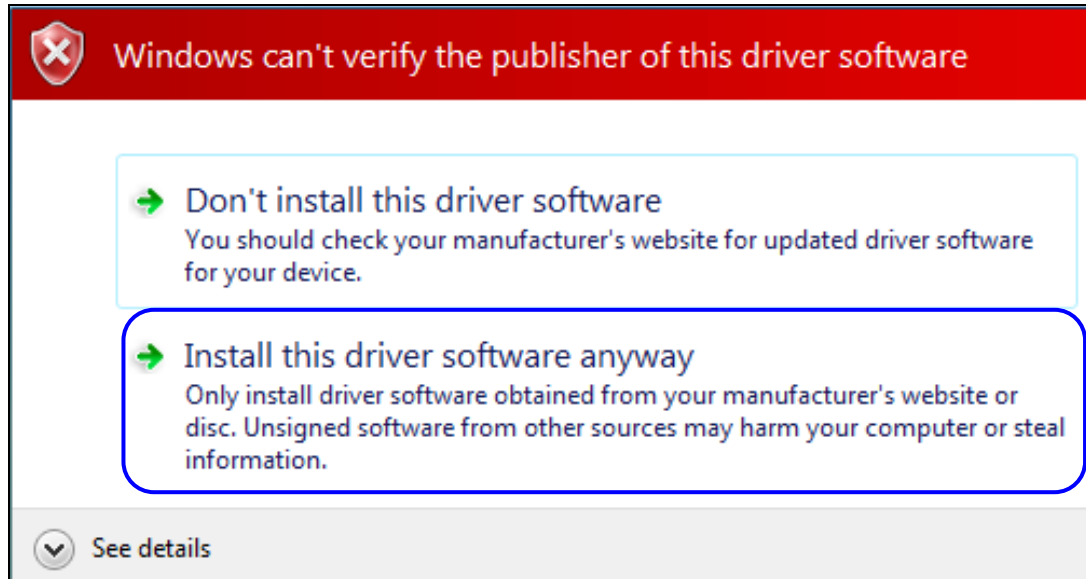


11. The “Welcome to the Device Driver Installation Wizard” appears indicating software drivers will install. Click “Next.”

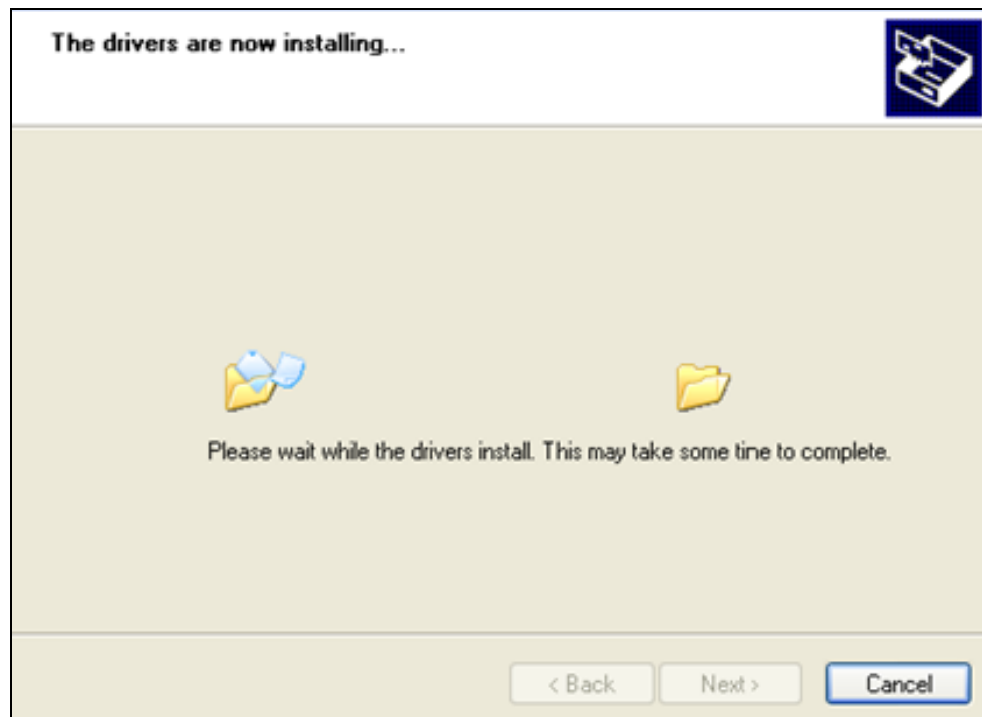




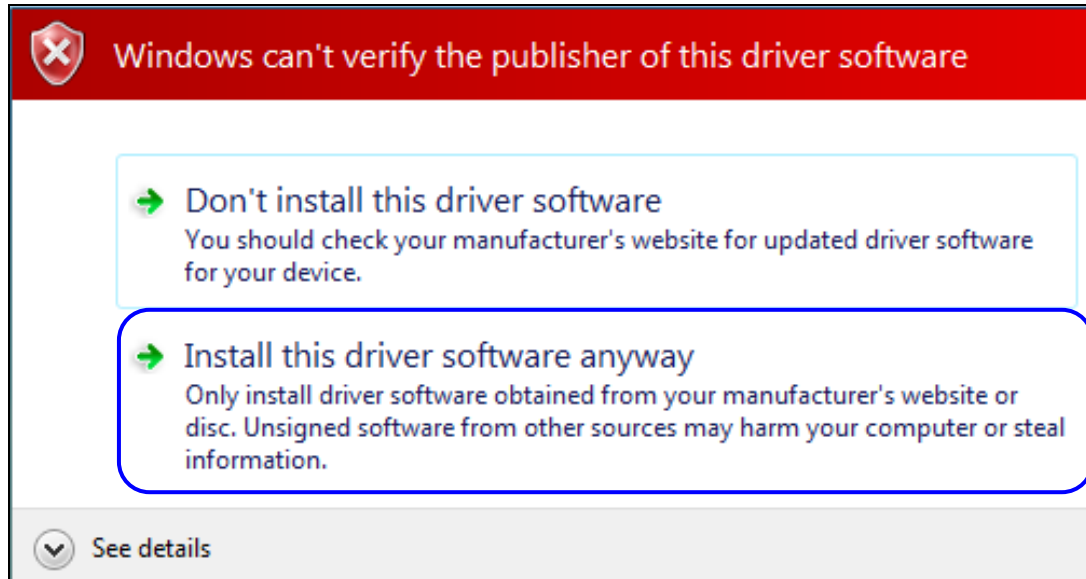
12. When the following message appears, click "Install this driver software anyway."



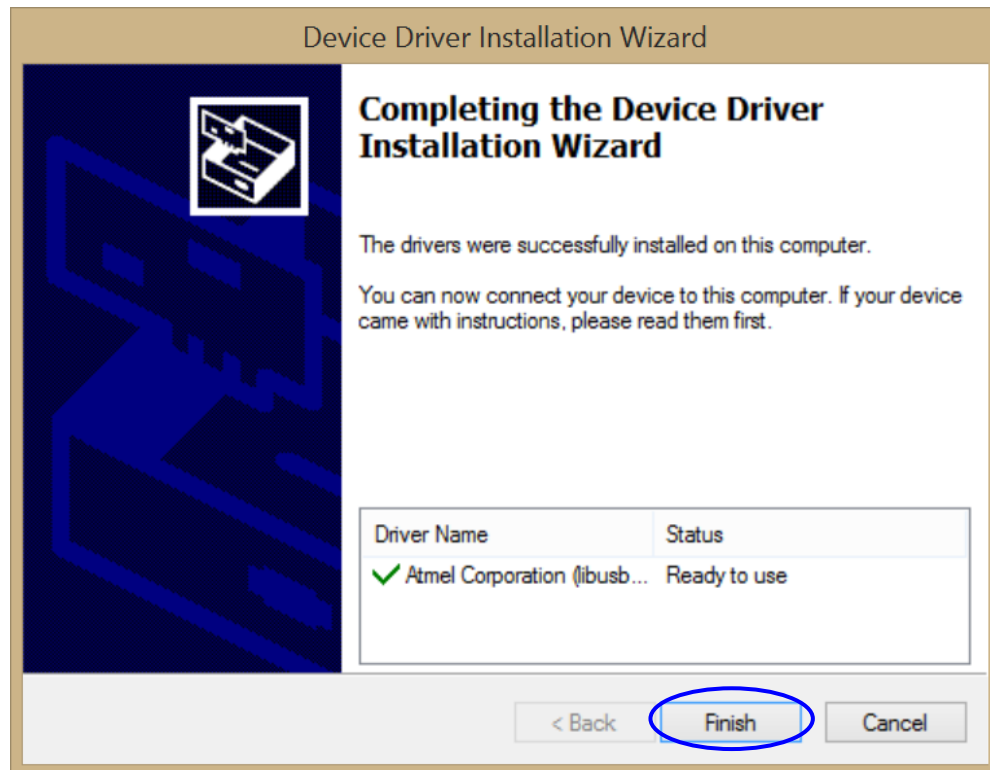
13. The following screen appears indicating drivers are installing.



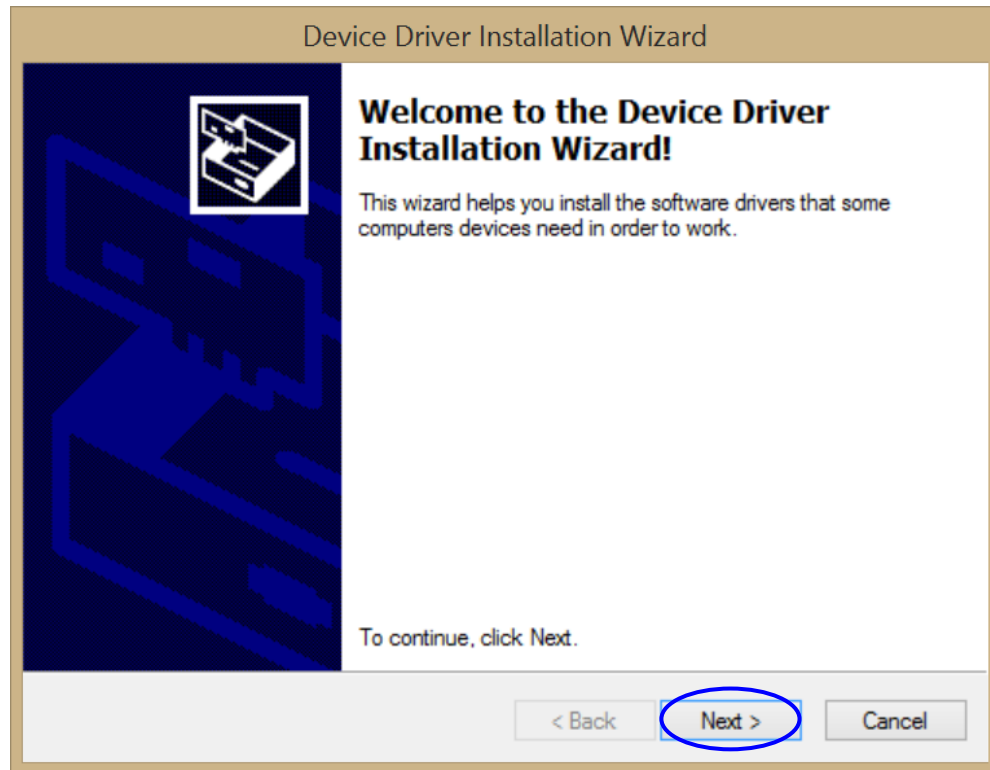
14. When the following message appears, click “Install this driver software anyway.”



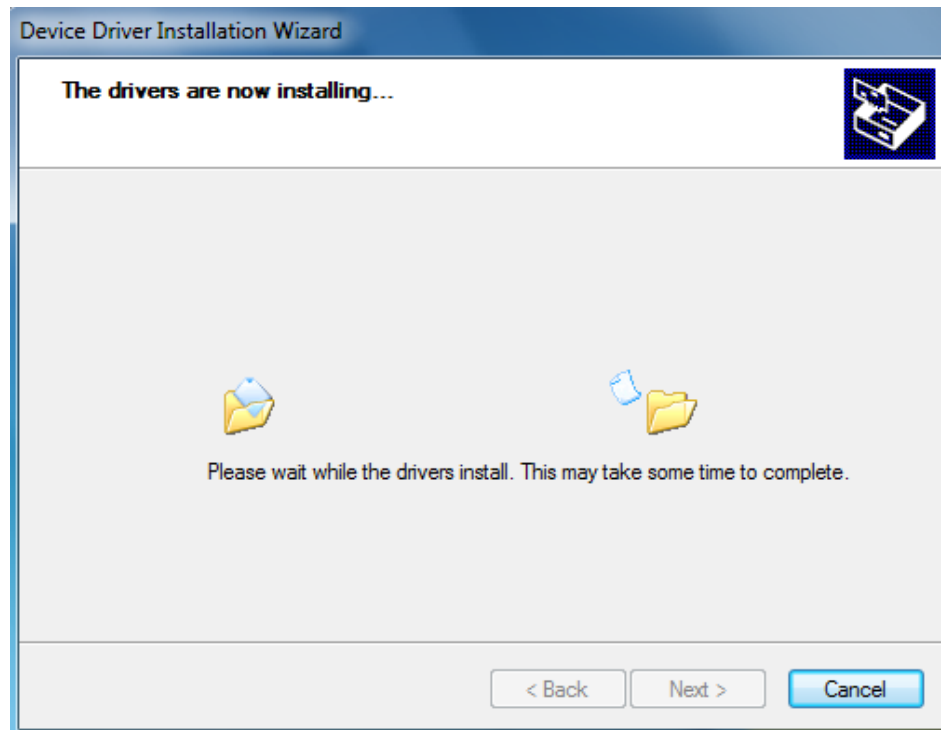
15. The “Completing the Device Driver Installation Wizard” appears indicating the drivers successfully installed. Click “Finish.”



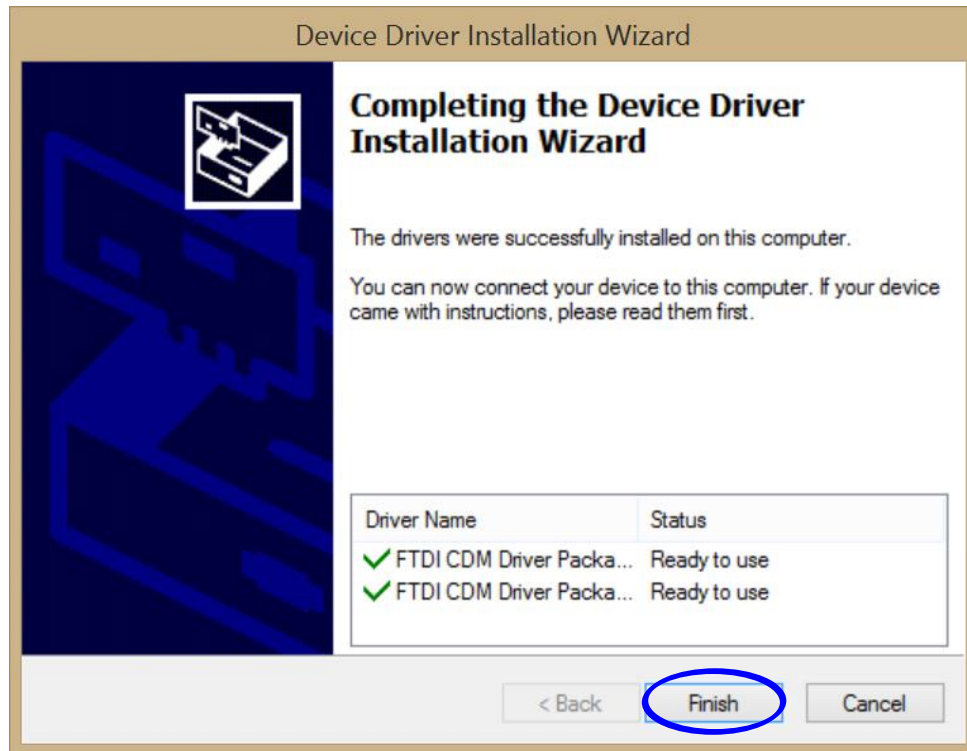
16. The “Welcome to the Device Driver Installation Wizard” appears indicating software drivers will install. Click “Next.”



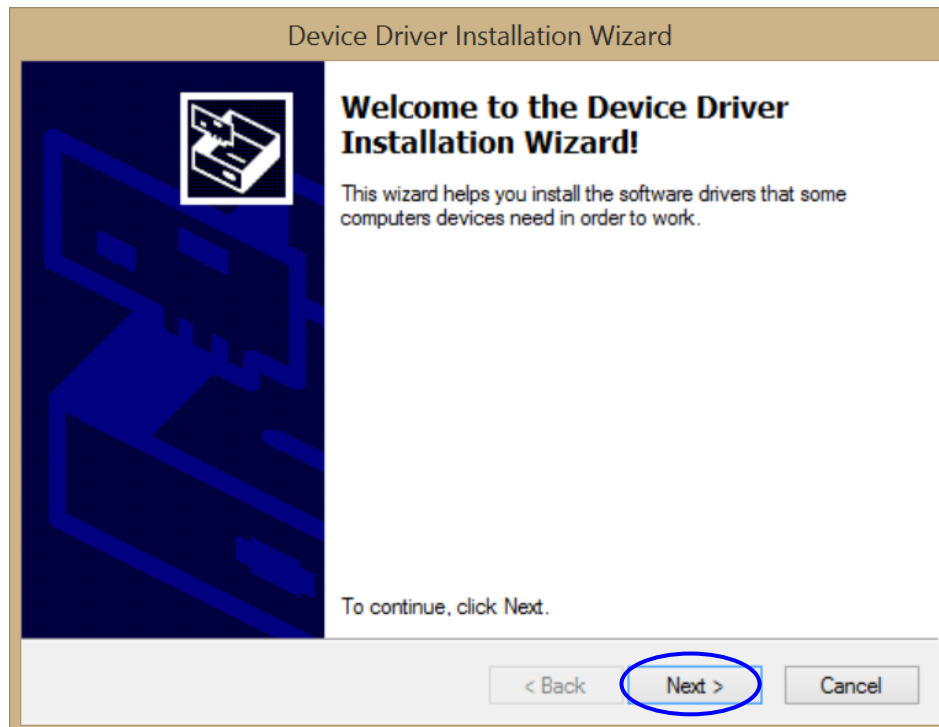
17. The following screen appears indicating the drivers are installing.



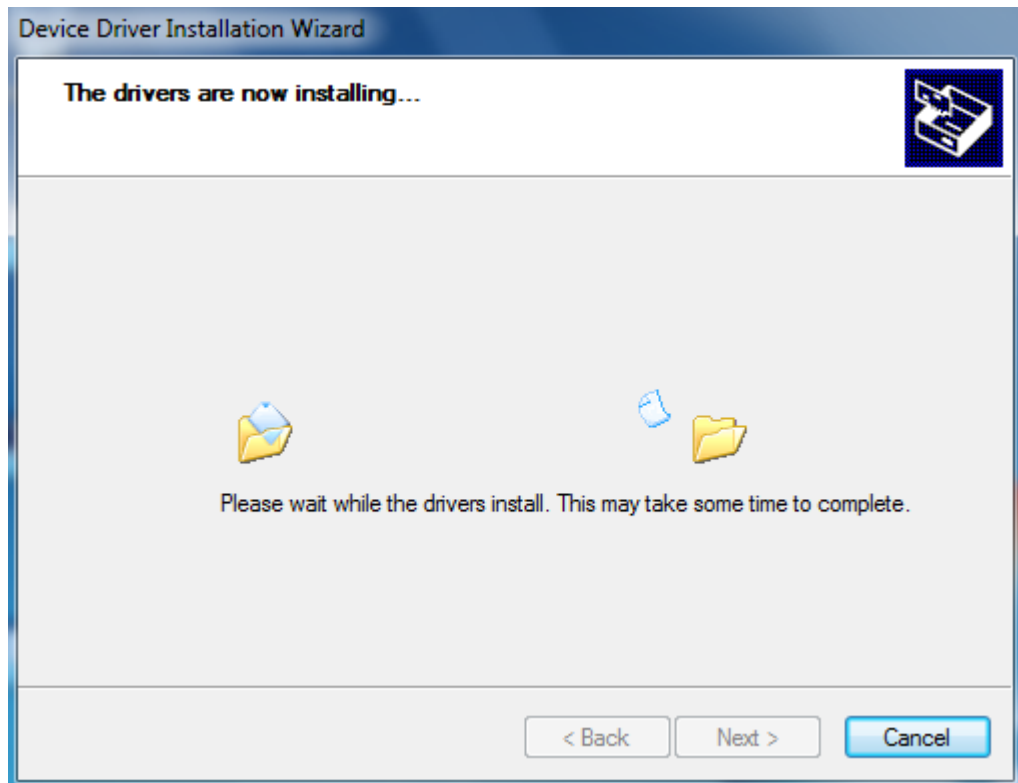
18. The following screen appears indicating the drivers successfully installed on the computer. Click "Finish."



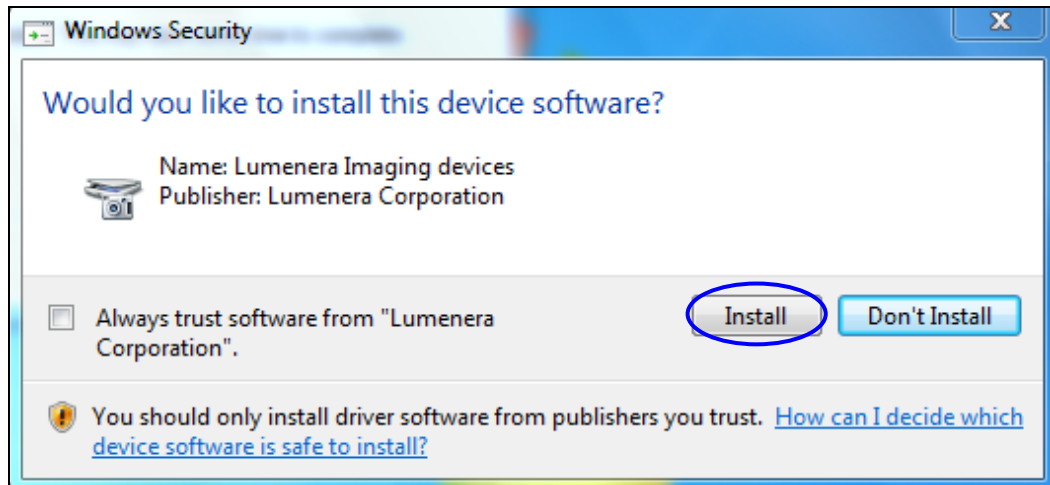
19. The "Welcome to the Device Driver Installation Wizard" appears indicating software drivers will install. Click "Next."



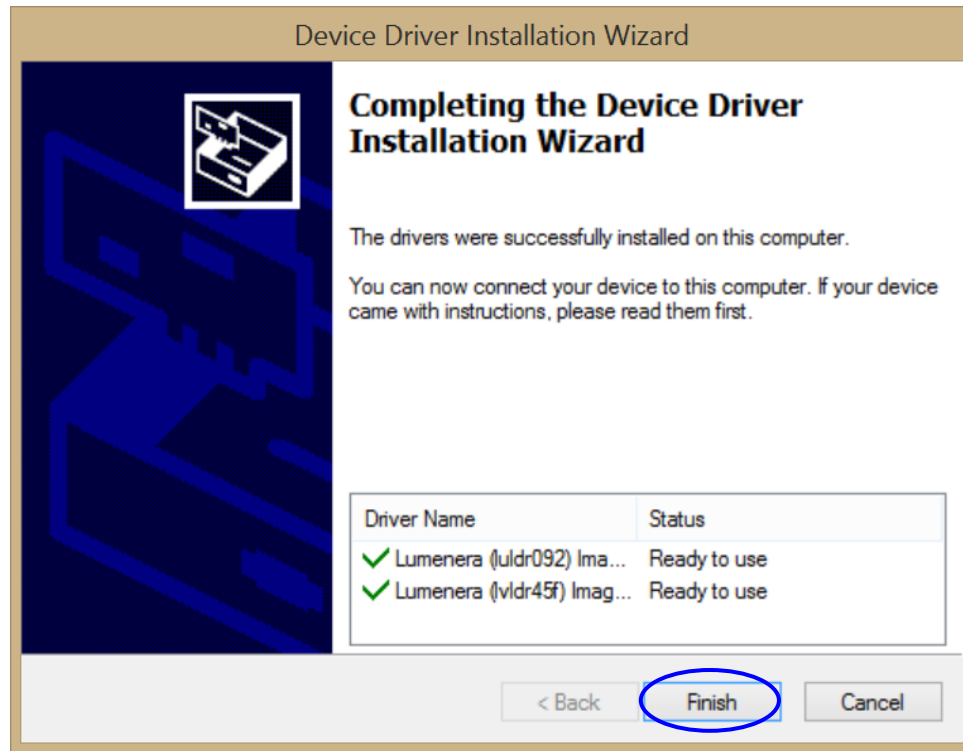
20. The following screen appears indicating the drivers are installing.



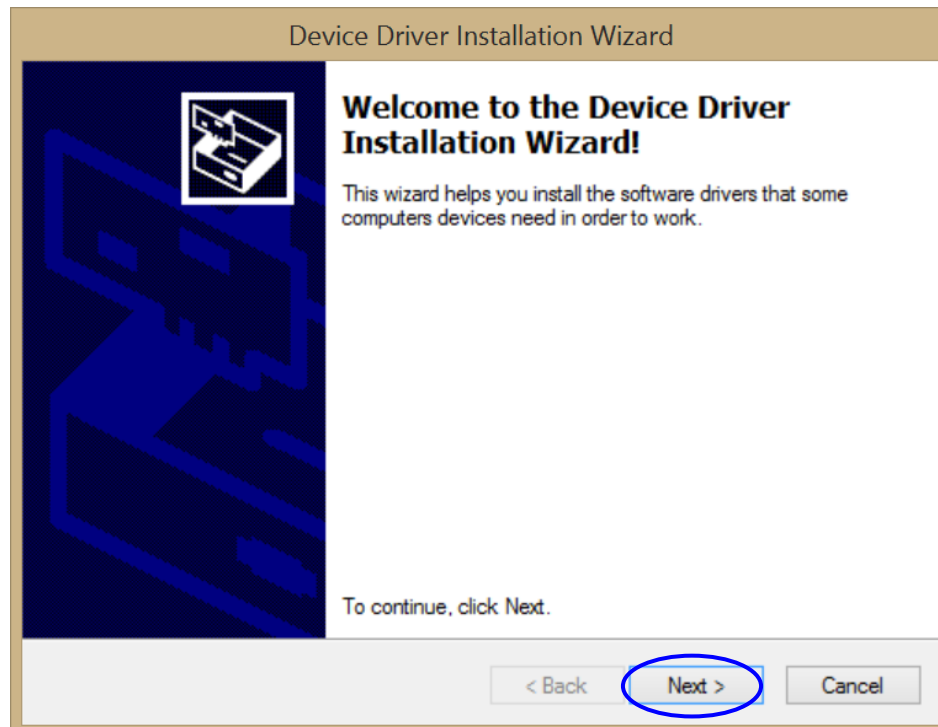
21. The following message appears asking if you would like to install the device software. Click "Install." When the message re-appears, click "Install" again.



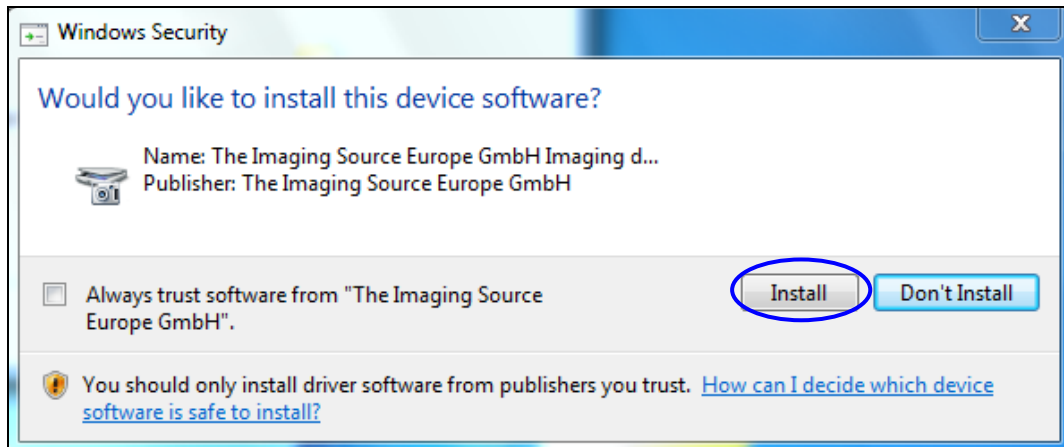
22. The following screen appears indicating the Lumenera camera drivers successfully installed. Click “Finish.”



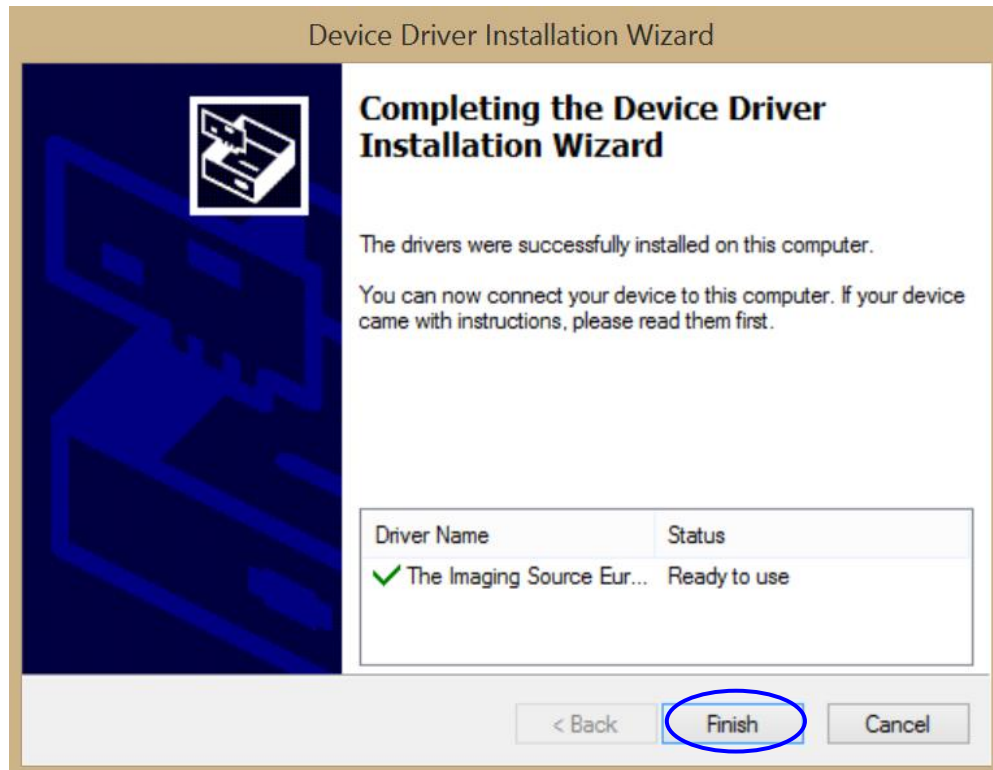
23. The “Welcome to the Device Driver Installation Wizard” appears indicating software drivers will install. Click “Next.”



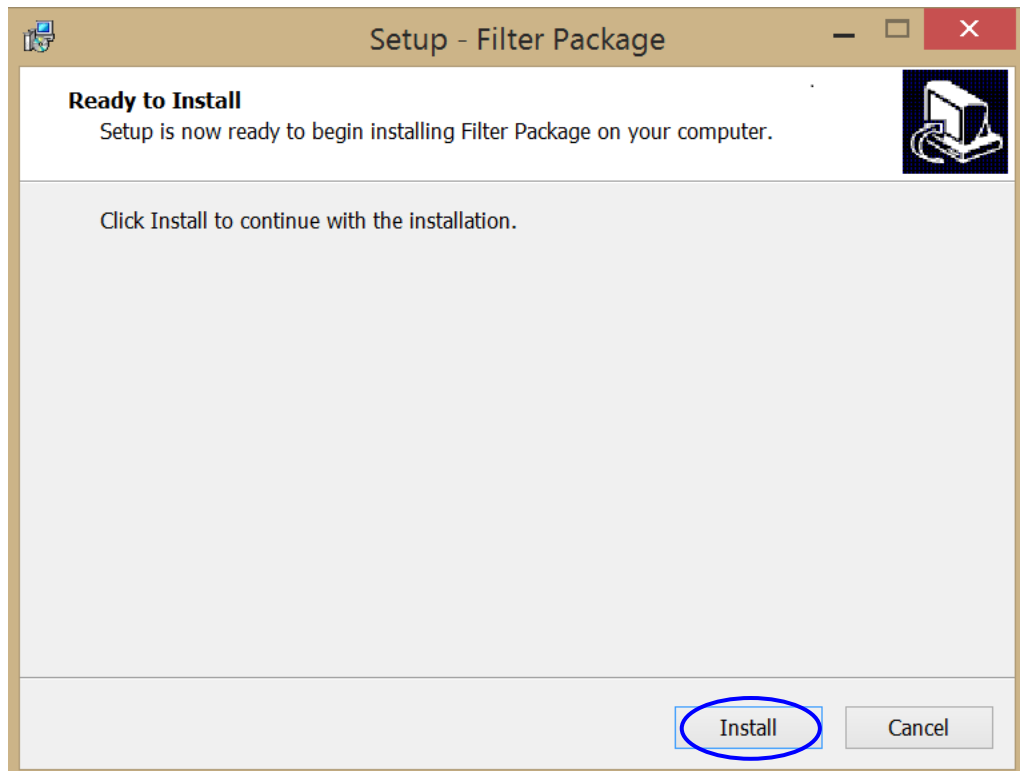
24. As the drivers are installing, the following screen appears asking if you would like to install the device software. Click "Install."



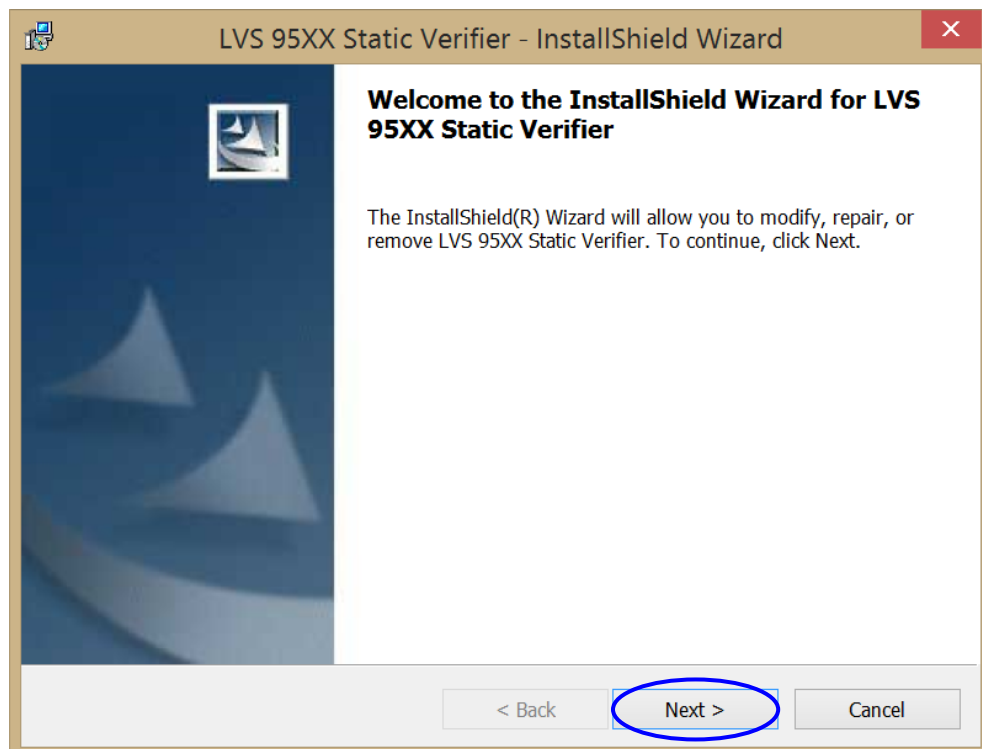
25. The following screen appears indicating the drivers successfully installed. Click "Finish."



26. The “Ready to Install” screen appears. Click “Install.”

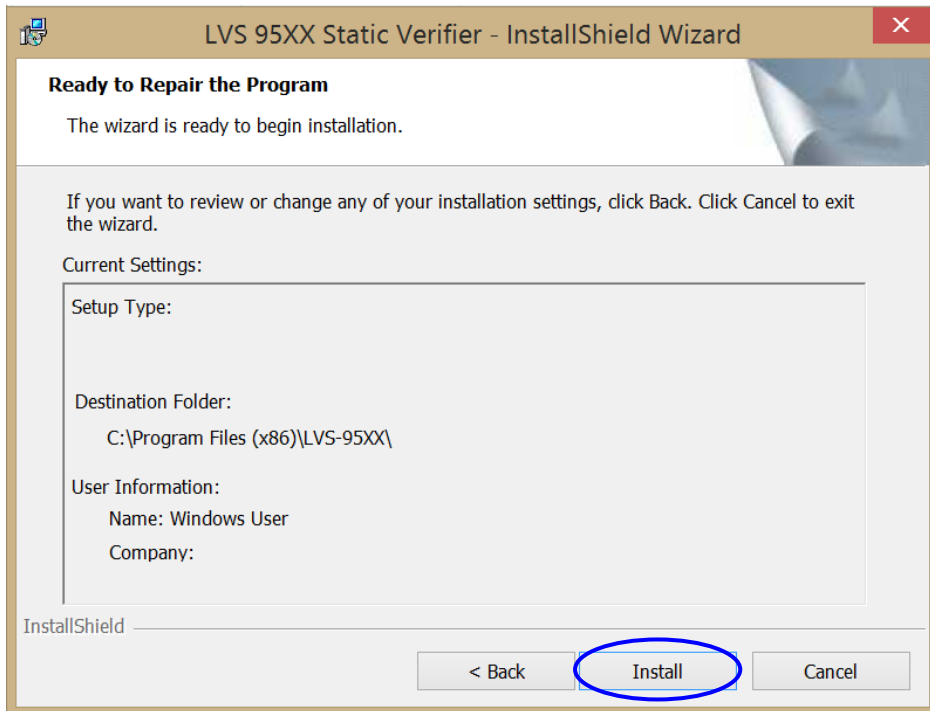


27. The “InstallShield Wizard” appears indicating the LVS-95XX Static Verifier will install on your computer. Click “Next.”

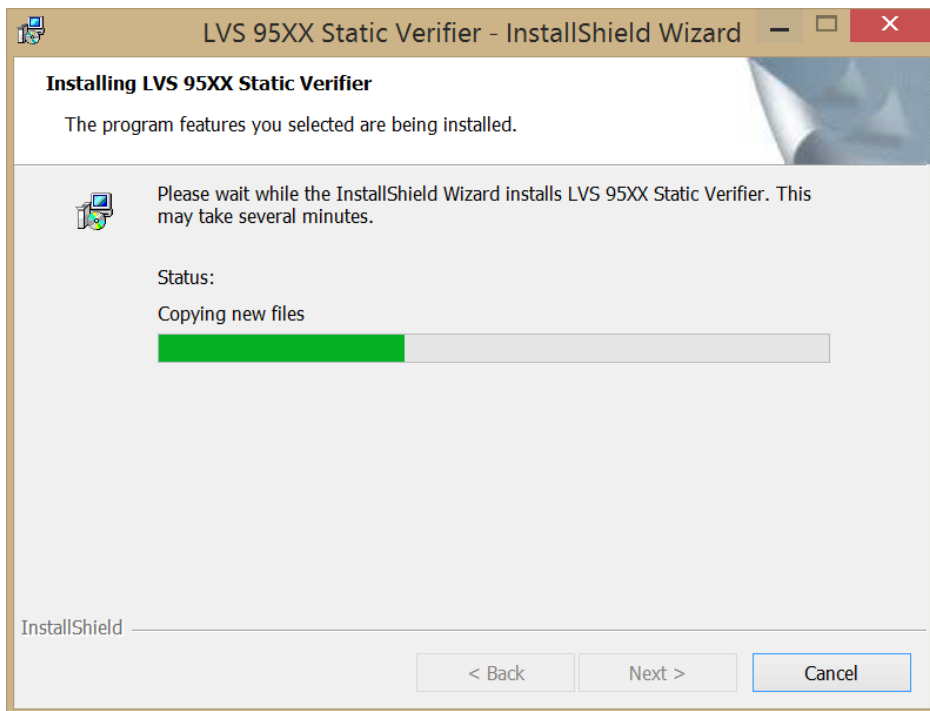




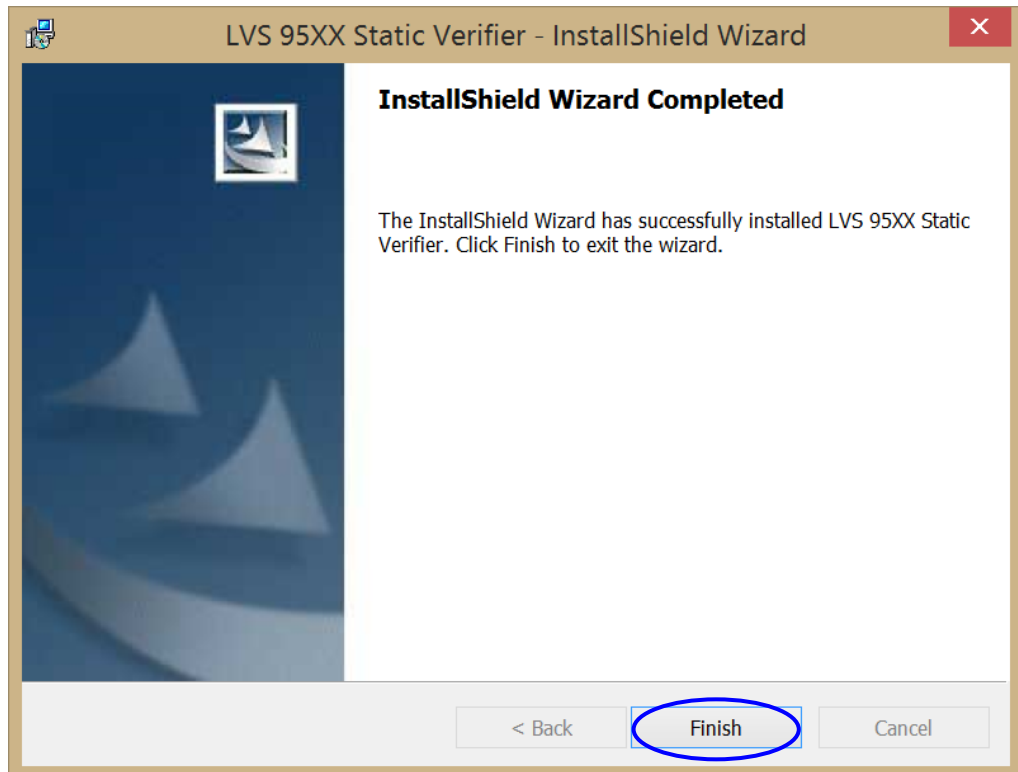
28. The wizard is ready to begin installation. Click “Install.”



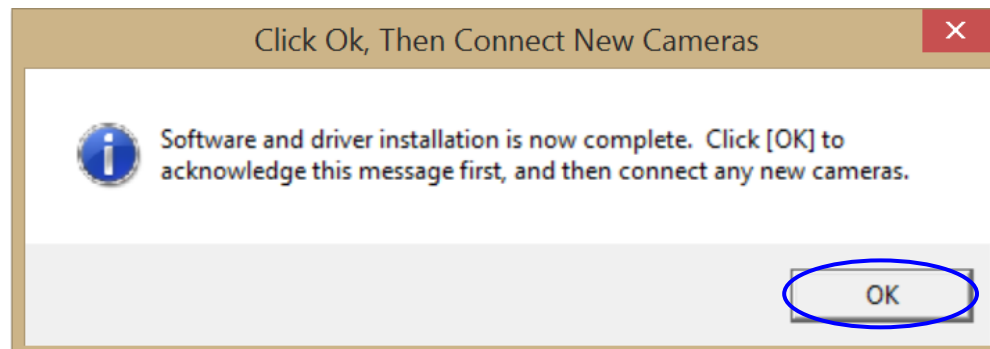
29. The following screen appears indicating the LVS-95XX Static Verifier is installing.



30. The following screen appears when installation of the LVS-95XX Static Verifier is complete. Click "Finish."



31. The following message appears indicating the software and driver installation is complete. Click "OK."



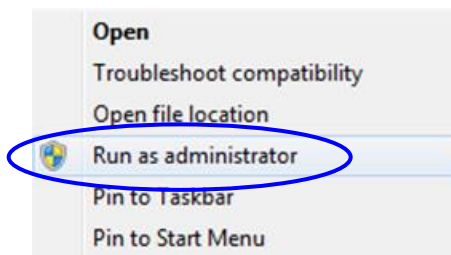
32. Using the supplied USB cable, insert one end of the USB cable into the computer's USB port; insert the other end of the USB cable into the USB port on the LVS-95XX verifier.

**IMPORTANT:** The LVS-9570 must connect to a dedicated USB port on the computer; the LVS-9570 cannot connect to an external USB Hub unless the Hub is externally powered. Failure to comply with these rules results in abnormal contrast readings.

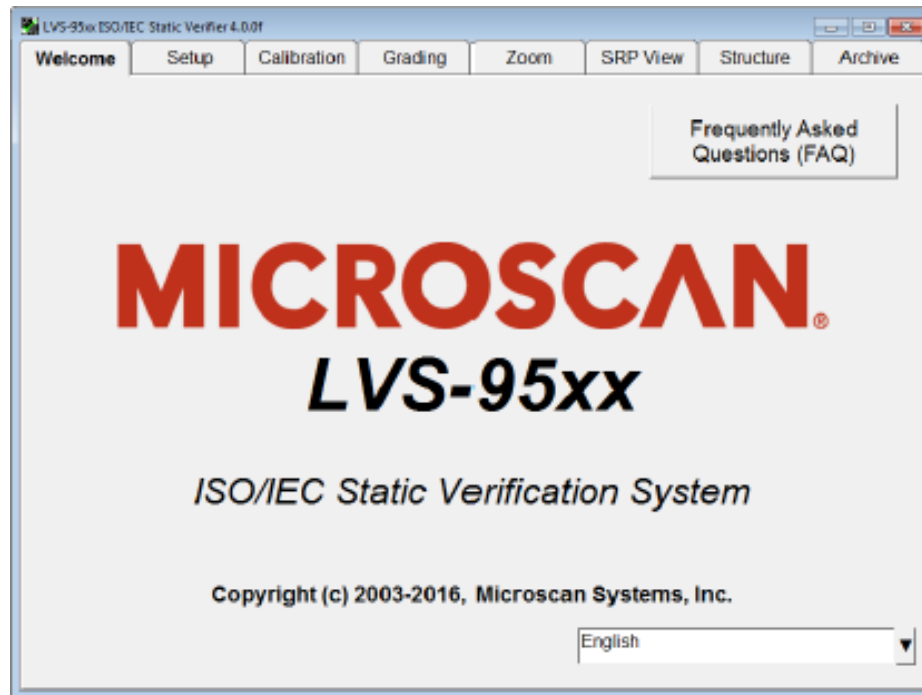
**Tip:** A green light on the back of the LVS-9570 turns on after the LVS-95XX software is installed.

33. Remove the Installation flash drive from the USB port.
34. Restart the computer.

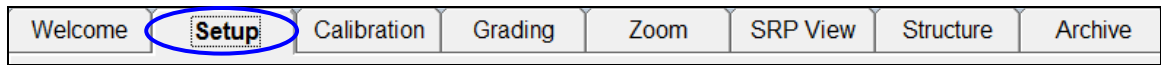
**IMPORTANT note for Windows® 7 64-bit operating systems:** If the LVS-95XX software does not automatically restart, right-click on the LVS-95XX desktop icon and select “Run as administrator.” The LVS-95XX software then opens. This is a one-time step and is not required the next time you log on to the LVS-95XX software.



35. The “Welcome” screen automatically appears if the software loaded correctly.  
If the software did not load correctly, contact your Microscan Distributor or Microscan technical support at +1.800.762.1149 or e-mail [helpdesk@microscan.com](mailto:helpdesk@microscan.com).



36. Click the “Setup” tab. The “Login” box appears. Enter “admin” (not case sensitive) in the “Operator ID” field and “admin” (not case sensitive) in the “Password” field, and then click “OK.”



37. Within the “Camera” section, select the desired camera. Your screen may look differently depending on which cameras are being utilized.

38. Installation is complete. The system you are using must now be calibrated. Read the information below for next steps.

- **LVS-9570 Systems:** Calibration steps are outlined in the following guides:
  - “LVS-9570 Operating Instructions” guide (see “LVS-95XX Software Steps” section). This manual is located on the Installation USB flash drive and on the flash drive supplied with your LVS-9570 system.

- “LVS-95XX Series Barcode Quality Station Operations Manual” (see “Calibration Tab” section). This manual is located on the Installation flash drive supplied with your system.
- **LVS-9580 Systems:** Calibration steps are outlined in the following guides:
  - “LVS-9580 Operating Instructions” guide (see “LVS-95XX Software Steps” section). This manual is located on the Installation flash drive supplied with your LVS-9580 system.
  - “LVS-95XX Series Barcode Quality Station Operations Manual” (see “Calibration Tab” section). This manual is located on the Installation flash drive supplied with your system.
- **LVS-9510 Systems:** Calibration steps are outlined in the “LVS-95XX Series Barcode Quality Station Operations Manual” (see “Calibration Tab” section). This manual is located on the Installation flash drive supplied with your system.

## Appendix A: LVS-9510 Auxiliary Readhead Installation Steps

Follow the steps below to install an LVS-9510 Auxiliary Readhead.

The customer-supplied computer connecting to the 5.0 MP Auxiliary Readhead must be running LVS-95XX software version 3.0.8 or higher.

### Installation Checklist

Ensure the following items arrived in your shipping carton. Contact your Microscan sales representative if any items are missing.

- Auxiliary Readhead
- USB cable
- Power cord (for North American shipments only)
- Power supply (requires localized power cord for shipments outside North America)
- "LVS-95XX Series Software Installation Guide" (this document)
- Calibrated Conformance Test Card (Microscan calibrates the Auxiliary Readhead prior to shipment)

**IMPORTANT:** The Auxiliary Readhead arrives to your site packaged in a specially designed shipping carton. DO NOT discard this shipping carton in case you must ship or store the system for any reason. Failure to use this carton when returning your product to Microscan will void warranty.

### Installation Steps

1. Place the Auxiliary Readhead on a flat surface away from strong overhead lights or sunlight.
2. Locate the power cord. Plug one end of the power cord into the power supply; plug the other end of the power cord into a power outlet.
3. Plug the power supply cable into the Auxiliary Readhead (located on right side panel).
4. Locate the USB cable. Insert one end of the cable into the USB port on the right side panel of the Auxiliary Readhead (USB port must be USB 2.0 compliant); plug the other end into the computer's USB port.
5. Turn on the LED light switch located on the right side panel of the Auxiliary Readhead.

**IMPORTANT:** Avoid looking directly into the lights. If you need to examine the lights, or look at any component near the lights, be sure to first turn off the lights.

6. Installation of the Auxiliary Readhead is complete. Auxiliary Readhead cameras are identified on the **Setup** tab within the **Camera** section.

